



# PAN-T60

Product technical features



**PANKOMERC**

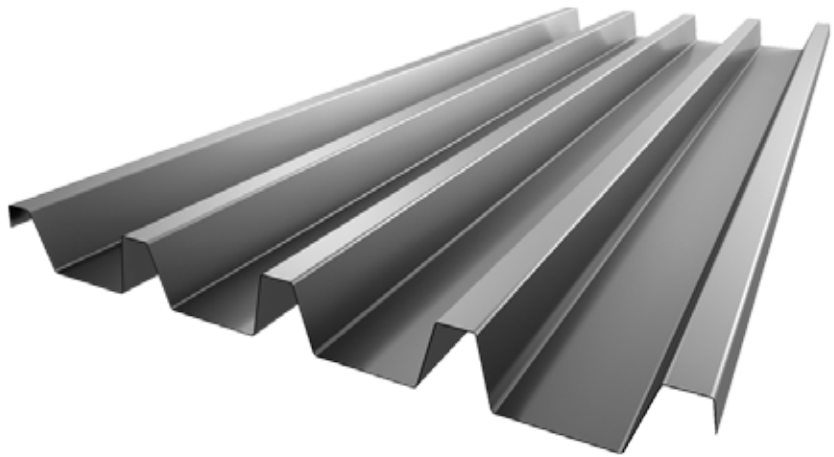
Sheet metal wizards®

# Pan-T60

Pan-T60 is 60 mm high profile and has rigidity for overcoming support distances over 4 meters.

It could be used as concrete molding profile or as Pan X sandwich system component.

This product can be made of aluminum and galvanized steel sheet metal.



Antikondenz felt can be placed



The product can be perforated



The product can be made of transparent polycarbonate



## Product features

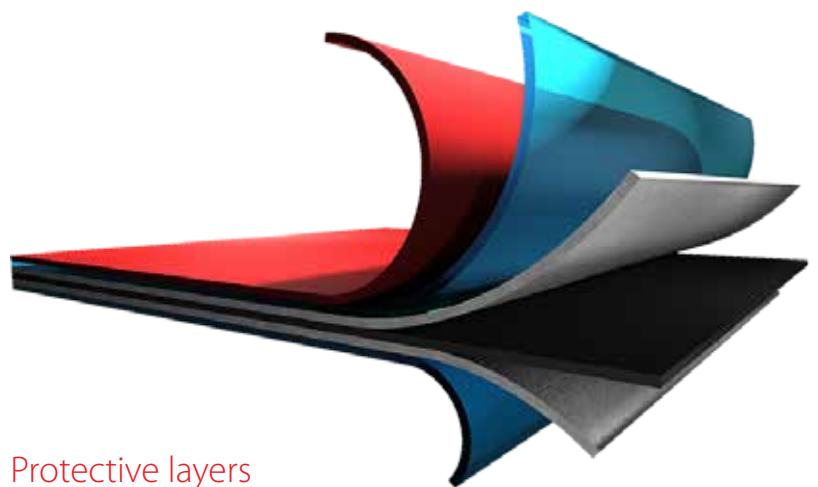
Profile length	0.5 - 17 m
Profile range	up to 4.75 m
Steel thickness	0.5 - 1.0 mm
Aluminum thickness	0.6 - 1.0 mm



## Weight table

Thickness	Weight (m <sup>2</sup> )	
0.5	6.67	x
0.6	8.00	2.70
0.7	9.33	3.15
0.8	10.66	3.60
1.0	13.33	4.50

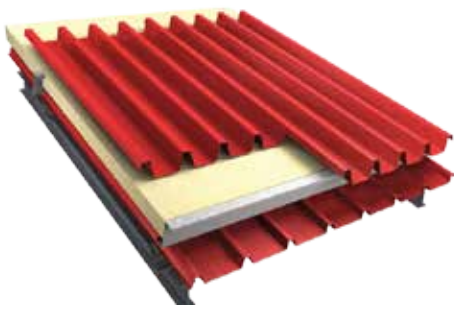
Galvanized Aluminium



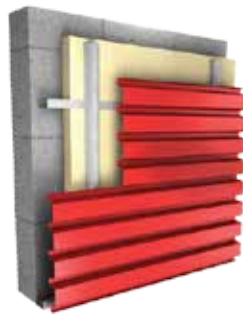
## Protective layers

- Polyester coating 20μ
- Primer 7μ
- Zinc coating 140gr/m<sup>2</sup>
- Steel base DX51 (0.5mm)

\*The values can be changed upon request



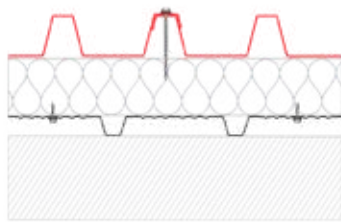
ROOF PROFILING



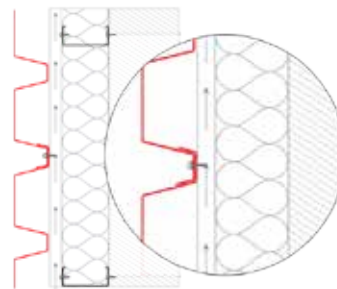
FACADE PROFILING



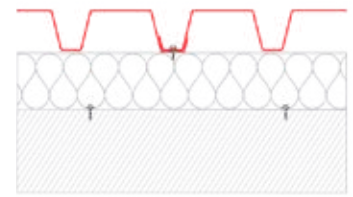
FACADE PROFILING



ROOF PROFILING  
INSTALLATION CROSS SECTION



FACADE PROFILING  
HORIZONTAL INSTALLATION CROSS SECTION



FACADE PROFILING  
VERTICAL INSTALLATION CROSS SECTION

## Load tables

LOAD TABLE PAN-T60 - GALVANIZED						
Thick-ness (mm)	Length (cm <sup>2</sup> /m)	Length (cm <sup>3</sup> /m)	Load (kN/m <sup>2</sup> )	Support beam span (l) for max deflection $f_{max} \leq l/200$ and allowed tension $\Sigma f_{doz} = 14 \text{ kN/cm}^2$		
				▲▲	▲▲▲	▲▲▲▲
0.50	43.37	11.51	1.00	3.27	3.59	4.01
			1.25	3.03	3.21	3.59
			1.50	2.85	2.93	3.28
			1.75	2.71	2.71	3.03
0.60	52.30	13.87	1.00	3.48	3.94	4.33
			1.25	3.23	3.56	3.94
			1.50	3.40	3.22	3.60
			1.75	2.88	2.98	3.33
0.70	60.83	16.10	1.00	3.66	4.25	4.55
			1.25	3.40	3.80	4.23
			1.50	3.20	3.46	3.87
			1.75	3.04	3.20	3.58
0.80	69.48	18.37	1.00	3.82	4.52	4.76
			1.25	3.55	4.05	4.42
			1.50	3.34	3.70	4.14
			1.75	3.17	3.42	3.83
1.00	86.56	22.81	1.00	4.11	5.05	5.12
			1.25	3.82	4.52	4.75
			1.50	3.59	4.12	4.47
			1.75	3.41	3.82	4.25

LOAD TABLE PAN-T60 - ALUMINIUM				
Span length (m)	Thickness (mm)	Maximum permissible load (kN/m <sup>2</sup> ) with maximum deflection of L/200		
		▲▲	▲▲▲	▲▲▲▲
2.50	0.7	105	253	200
	0.8	120	289	229
	1.0	150	361	286
2.75	0.7	79	190	150
	0.8	90	217	171
3.00	1.0	113	272	215
	0.7	60	145	114
	0.8	69	166	131
3.25	1.0	87	210	165
	0.7	48	116	91
	0.8	54	130	103
3.50	1.0	69	166	131
	0.7	38	92	72
	0.8	43	105	81
	1.0	55	132	105

▲▲▲ No of supports

## Standard colours chart

Colour	RAL number	PAN-T60	
		Galvanized	Aluminium
Silver Mettalic	9006	•	•
Dark Gray	9007	•	•
Alpine White	9002	•	•
Dirty White	9003	•	•
Anthracite	7016	•	•
Black	9005	•	•
Earth Brown	8019	•	•
Fire Red	3020	•	•
Brick Red	3009	•	•
Bright Green	6018	•	•
Steppe Green	6021		•
Forest Green	6028	•	•
Sea Blue	5010	•	•
Brick Red matte	3009	•	
Amazon Green matte	6020	•	
Anthracite matte	7016	•	•
Earth Brown matte	8017	•	•
Black matte	9005	•	
Titanium zinc			
Laminated foil	Wood imitation	•	
Laminated foil	Cooper imitation	•	•

Custom colors available on request



Knjaza Miloša 92/1  
(PO BOX 67)  
31 210 Požega, Serbia

### Wholesale

tel. +381 (0)31 812 225  
fax +381 (0)31 3716 091

### Retail and logistics

tel. +381 (0)31 825 058  
fax +381 (0)31 825 458  
e-mail: info@pankomerc.com

### Belgrade office

Mije Kovačevića 10a  
(Warehouse Inkotehna)  
11 000 Belgrade  
tel. +381 (0)11 27 64 491  
e-mail: beograd@pankomerc.com

[www.pankomerc.com](http://www.pankomerc.com)

