



PAN-S27

Product technical features

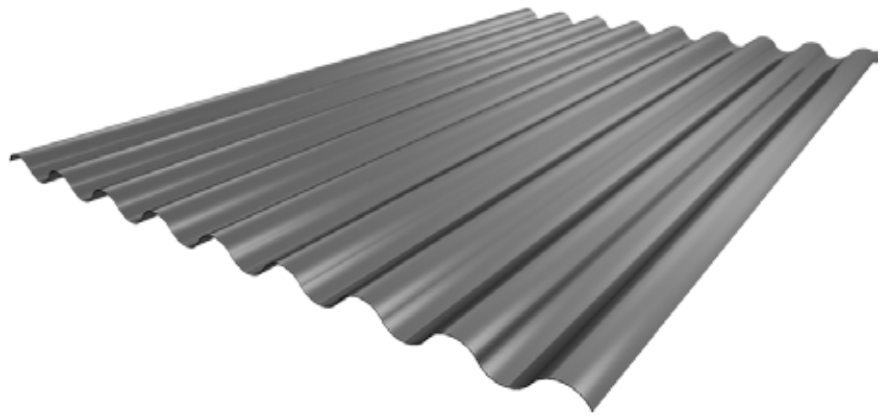


PANKOMERC
Sheet metal wizards®

Pan-S27

Pan-S27 sinusoidal profiled sheet metal which follows the latest trends in architecture and building construction. It stands out from the standard trapezoidal profiles with its harmonious curves and it makes the facades and roofs true works of art. Curved profile lines provide easy water run-off and dust free surfaces.

This product can be made of aluminum and galvanized steel sheet metal.



Antikondenz felt can be placed



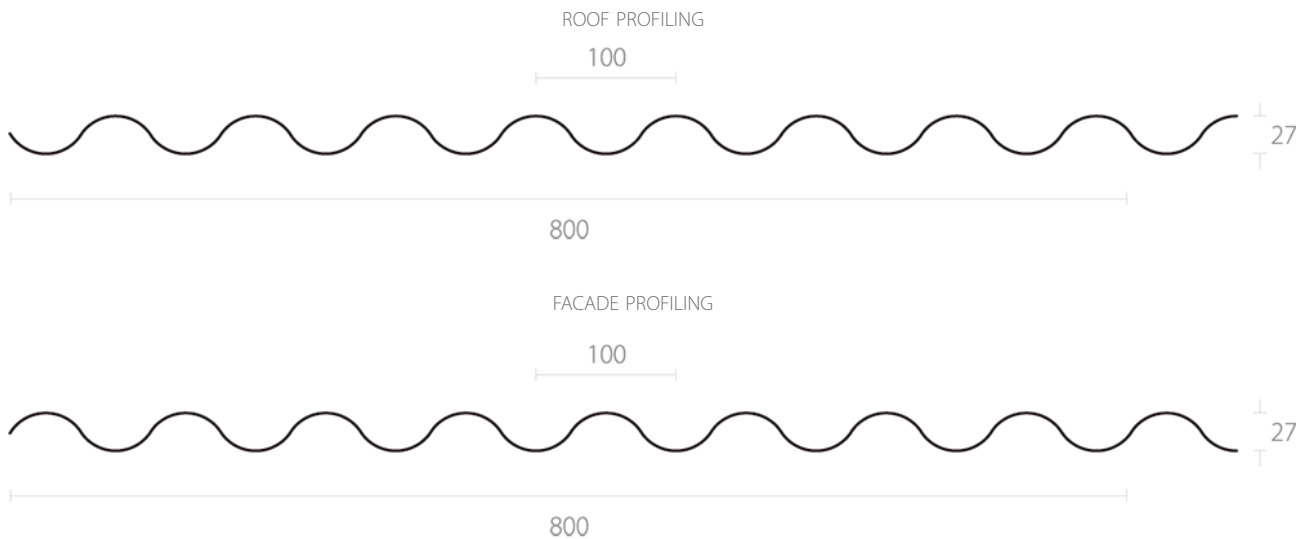
The product can be curved



The product can be perforated



The product can be made of transparent polycarbonate



Product features

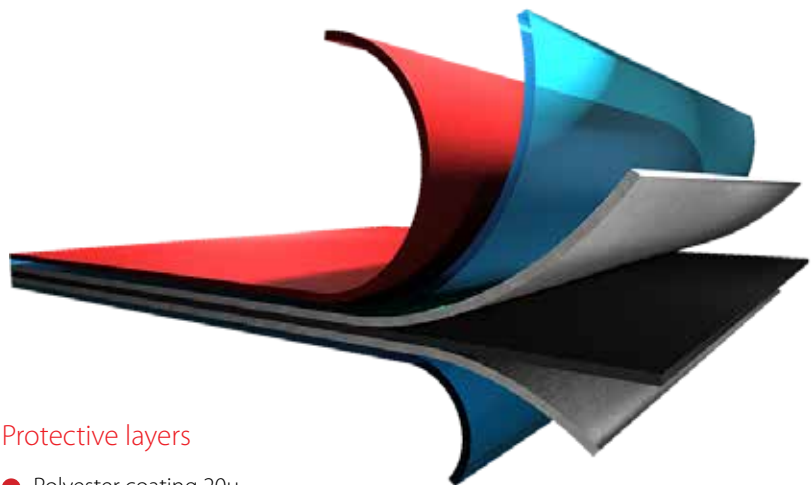
Profile length	0.2 - 12 m
Profile range	up to 3.3 m
Steel thickness	0.5 - 1.5 mm
Aluminum thickness	0.6 - 1.5 mm



Weight table

Thickness	Weight (m ²)	
0.5	5.0	x
0.6	6.0	2.03
0.7	7.0	2.41
0.8	8.0	2.40
1.0	10.0	3.37
1.2	12.0	4.05
1.5	15.0	5.06

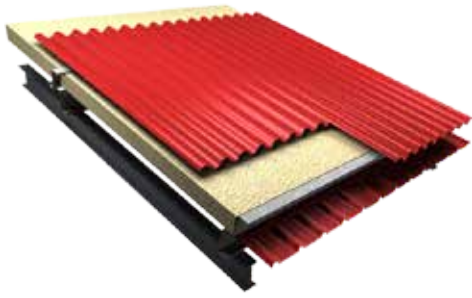
Galvanized Aluminium



Protective layers

- Polyester coating 20μ
- Primer 7μ
- Zinc coating 140gr/m²
- Steel base DX51 (0.5mm)

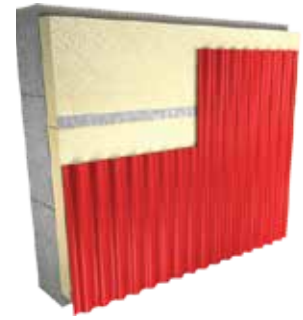
*The values can be changed upon request



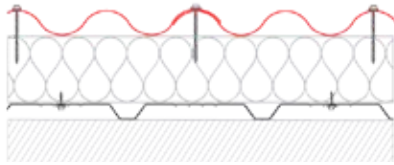
ROOF PROFILING



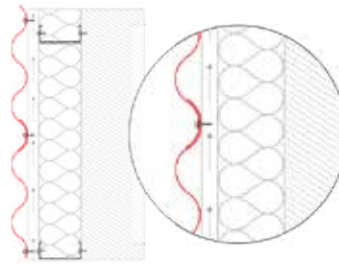
FACADE PROFILING



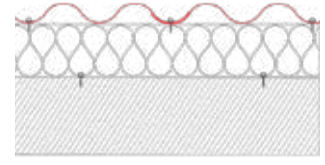
FACADE PROFILING



ROOF PROFILING
INSTALLATION CROSS SECTION



FACADE PROFILING
HORIZONTAL INSTALLATION CROSS SECTION



FACADE PROFILING
VERTICAL INSTALLATION CROSS SECTION

Load tables

LOAD TABLE PAN-S27- GALVANIZED					LOAD TABLE PAN-S27- ALUMINIUM								
Thick- ness (mm)	Profile length (cm ² /m)	Profile length (cm ³ /m)	Load (kN/m ²)	Support beam span (l) for max deflection f _{max} ≤ l/200 and allowed tension Σ f _{d0z} = 14 kN/cm ²			Thick- ness (mm)	Profile length (cm ² /m)	Profile length (cm ³ /m)	Load (kN/m ²)	Support beam span (l) for max deflection f _{max} ≤ l/200 and allowed tension Σ f _{d0z} = 14 kN/cm ²		
				▲▲	▲▲▲	▲▲▲▲					▲▲	▲▲▲	▲▲▲▲
0.60	7.18	5.18	1.00	1.80	2.41	2.24	0.60	7.18	5.18	1.00	1.24	1.64	1.55
			1.25	1.67	2.15	2.08				1.25	1.16	1.47	1.44
			1.50	1.57	1.97	1.95				1.50	1.09	1.34	1.35
			1.75	1.49	1.82	1.85				1.75	1.03	1.24	1.29
0.80	9.53	6.86	1.00	1.97	2.68	2.46	0.70	9.53	6.86	1.00	1.30	1.75	1.62
			1.25	1.83	2.48	2.28				1.25	1.21	1.59	1.51
			1.50	1.72	2.26	2.15				1.50	1.14	1.44	1.42
			1.75	1.64	2.10	2.04				1.75	1.08	1.33	1.35
1.00	11.92	8.51	1.00	2.13	2.89	2.65	0.8	11.92	8.51	1.00	1.37	1.86	1.70
			1.25	1.97	2.68	2.46				1.25	1.27	1.69	1.59
			1.50	1.86	2.52	2.31				1.50	1.20	1.54	1.49
			1.75	1.76	2.33	2.20				1.75	1.14	1.43	1.41
1.20	14.30	10.14	1.00	2.26	3.07	2.81	1.0	17.88	12.54	1.00	1.47	2.00	1.83
			1.25	2.10	2.85	2.61				1.25	1.37	1.86	1.70
			1.50	1.97	2.68	2.46				1.50	1.29	1.72	1.60
1.50	17.88	12.54	1.75	1.87	2.55	2.33	1.50	17.88	12.54	1.75	1.22	1.59	1.52
			1.00	2.43	3.30	3.03				1.00	1.67	2.29	2.10
			1.25	2.26	3.07	2.81				1.25	1.57	2.13	1.95
			1.50	2.13	2.89	2.65				1.50	1.47	2.00	1.84
			1.75	1.93	2.74	2.51			1.75	1.40	1.90	1.74	

▲▲▲ No of supports

Standard colours chart

Colour	RAL number	PAN-S27	
		Galvanized	Aluminium
Silver Mettalic	9006	•	•
Dark Gray	9007	•	•
Alpine White	9002	•	•
Dirty White	9003	•	•
Anthracite	7016	•	•
Black	9005	•	•
Earth Brown	8019	•	•
Fire Red	3020	•	•
Brick Red	3009	•	•
Bright Green	6018	•	•
Steppe Green	6021		•
Forest Green	6028	•	•
Sea Blue	5010	•	•
Brick Red matte	3009	•	
Amazon Green matte	6020	•	
Anthracite matte	7016	•	•
Earth Brown matte	8017	•	•
Black matte	9005	•	
Titanium zinc		•	•
Laminated foil	Wood imitation	•	
Laminated foil	Cooper imitation	•	•

Custom colors available on request



PANKOMERC

Sheet metal wizards®

Knjaza Miloša 92/1
(PO BOX 67)
31 210 Požega, Serbia

Wholesale

tel. +381 (0)31 812 225
fax +381 (0)31 3716 091

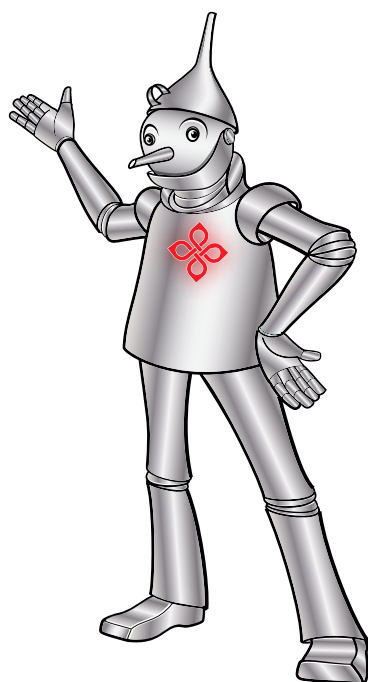
Retail and logistics

tel. +381 (0)31 825 058
fax +381 (0)31 825 458
e-mail: info@pankomerc.com

Belgrade office

Mije Kovačevića 10a
(Warehouse Inkotehna)
11 000 Belgrade
tel. +381 (0)11 27 64 491
e-mail: beograd@pankomerc.com

www.pankomerc.com



RoHS