



PAN-S18

Product technical features



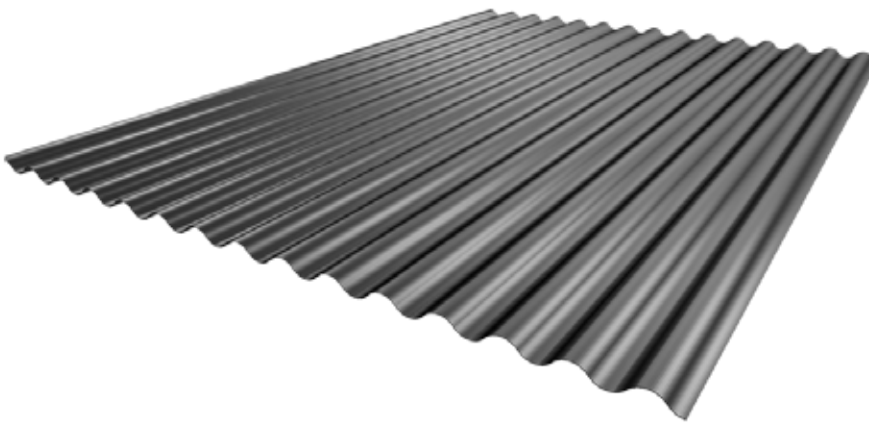
PANKOMERC

Sheet metal wizards®

Pan-S18

Pan-S18 is moderately profiled sheet metal with 18 mm high waves and it is widely used for facade covering and interior elements. It creates a unique effect on every surface.

This product can be made of aluminum and galvanized steel sheet metal.



Antikondenz felt can be placed



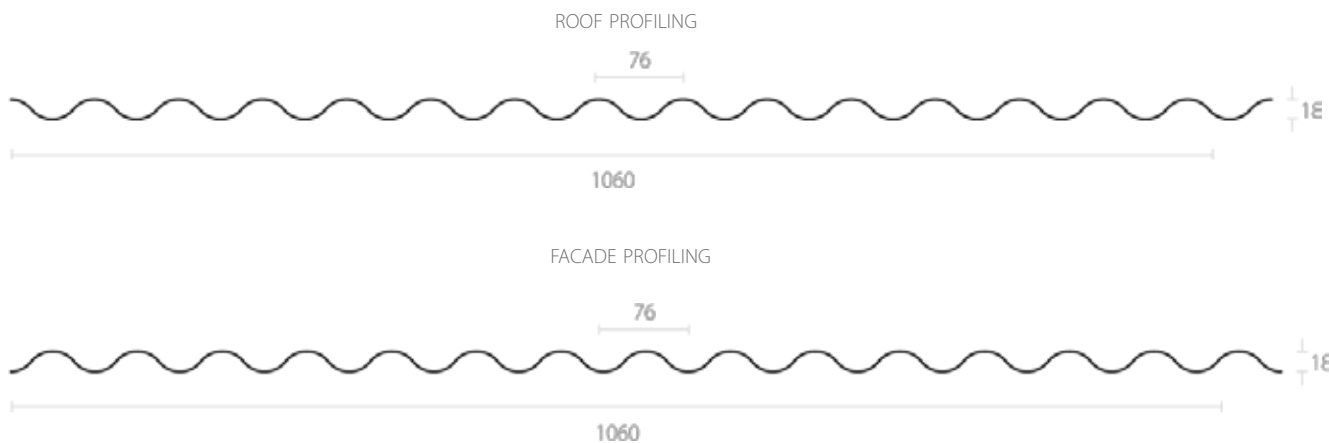
The product can be curved



The product can be perforated



The product can be made of transparent polycarbonate



Product features

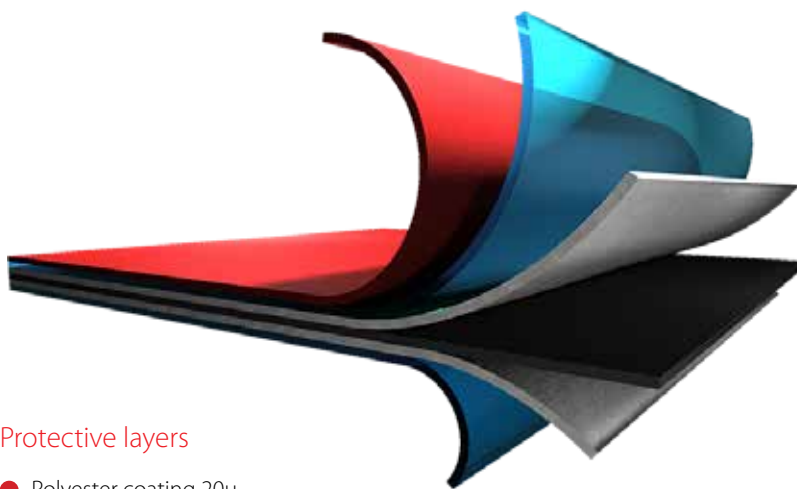
Profile length	0.2 - 9 m
Profile range	up to 2.3 m
Steel thickness	0.5 - 0.8 mm
Aluminum thickness	0.7 - 1.0 mm



Weight table

Thickness	Weight (m ²)	
0.5	4.70	x
0.6	5.66	x
0.7	6.60	2.23
0.8	7.54	2.55
1.0	x	3.18

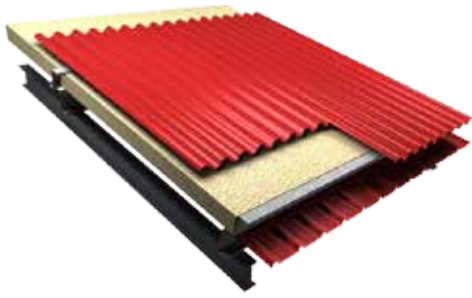
Galvanized Aluminium



Protective layers

- Polyester coating 20 μ
- Primer 7 μ
- Zinc coating 140gr/m²
- Steel base DX51 (0.5mm)

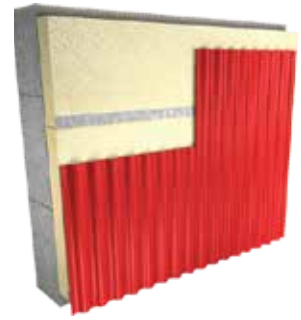
* The values can be changed upon request



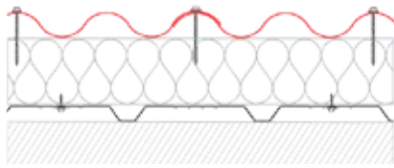
ROOF PROFILING



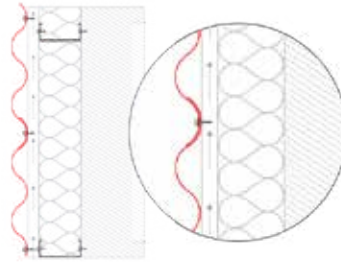
FACADE PROFILING



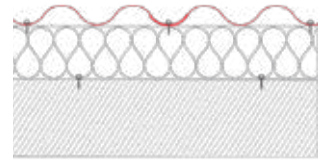
FACADE PROFILING



ROOF PROFILING
INSTALLATION CROSS SECTION



FACADE PROFILING
HORIZONTAL INSTALLATION CROSS SECTION



FACADE PROFILING
VERTICAL INSTALLATION CROSS SECTION

Load tables

LOAD TABLE PAN-S18- GALVANIZED						
Thick- ness (mm)	Profile length (cm ² /m)	Profile length (cm ³ /m)	Load (kN/m ²)	Support beam span (l) for max deflection $f_{max} \leq l/200$ and allowed tension $\Sigma f_{doz} = 14 \text{ kN/cm}^2$		
				▲▲	▲▲▲	▲▲▲▲
50	3.06	2.40	1.00	1.35	1.64	1.68
			1.25	1.25	1.46	1.56
			1.50	1.18	1.34	1.47
			1.75	1.12	1.25	1.38
0.60	3.66	2.86	1.00	1.43	1.79	1.78
			1.25	1.33	1.60	1.65
			1.50	1.25	1.46	1.56
			1.75	1.19	1.35	1.48
0.70	4.26	3.31	1.00	1.51	1.92	1.87
			1.25	1.40	1.72	1.74
			1.50	1.32	1.57	1.64
			1.75	1.25	1.45	1.56
0.80	4.86	3.76	1.00	1.57	2.05	1.96
			1.25	1.46	1.83	1.82
			1.50	1.38	1.67	1.71
			1.75	1.30	1.55	1.63

▲▲▲ No of supports

LOAD TABLE PAN-S18 - ALUMINIUM				
Span length (m)	Thickness (mm)	Support beam span (l) for max deflection $f_{max} \leq l/200$ and allowed tension $\Sigma f_{doz} = 14 \text{ kN/cm}^2$		
		▲▲	▲▲▲	▲▲▲▲
1.00	0.7	84	202	160
	0.8	96	252	182
	1.0	120	289	228
1.25	0.7	43	104	84
	0.8	49	117	93
	1.0	61	147	116
1.50	0.7	25	60	47
	0.8	27	65	51
	1.0	26	87	68
1.75	0.7	16	39	30
	0.8	18	43	34
	1.0	22	53	42
2.00	0.7	10	25	20
	0.8	12	29	23
	1.0	15	36	28

Standard colours chart

Colour	RAL number	PAN-S18	
		Galvanized	Aluminium
Silver Mettalic	9006	•	•
Dark Gray	9007	•	•
Alpine White	9002	•	•
Dirty White	9003	•	•
Anthracite	7016	•	•
Black	9005	•	•
Earth Brown	8019	•	•
Fire Red	3020	•	•
Brick Red	3009	•	•
Bright Green	6018	•	•
Steppe Green	6021		•
Forest Green	6028	•	•
Sea Blue	5010	•	•
Brick Red matte	3009	•	
Amazon Green matte	6020	•	
Anthracite matte	7016	•	•
Earth Brown matte	8017	•	•
Black matte	9005	•	
Titanium zinc		•	•
Laminated foil	Wood imitation	•	
Laminated foil	Cooper imitation	•	•

Custom colors available on request



PANKOMERC

Sheet metal wizards®

Knjaza Miloša 92/1
(PO BOX 67)
31 210 Požega, Serbia

Wholesale

tel. +381 (0)31 812 225
fax +381 (0)31 3716 091

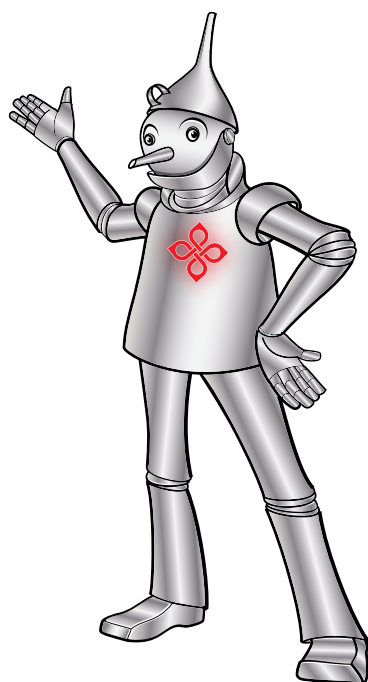
Retail and logistics

tel. +381 (0)31 825 058
fax +381 (0)31 825 458
e-mail: info@pankomerc.com

Belgrade office

Mije Kovačevića 10a
(Warehouse Inkotehna)
11 000 Belgrade
tel. +381 (0)11 27 64 491
e-mail: beograd@pankomerc.com

www.pankomerc.com



RoHS