



Metal fence elements

Product technical features



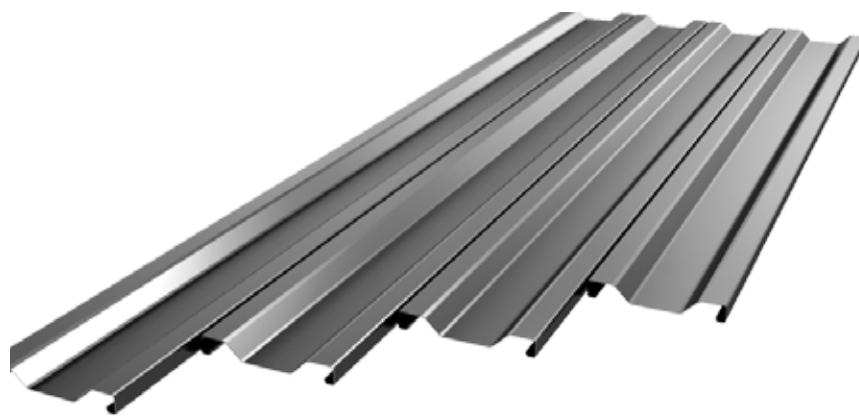
PANKOMERC

Sheet metal wizards®

Sheet metal fence elements

Now you can have toughness and longevity of metal on your fences.

Carefully designed element shape provide extraordinary toughness and unique visual impact. Elements can be variously combined thanks to the proportional segments which are seamlessly fitted together if joined.

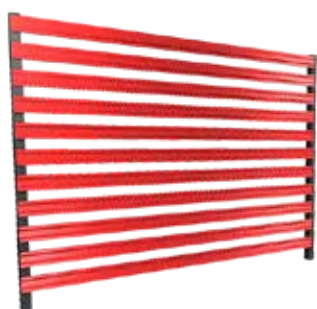


Product features

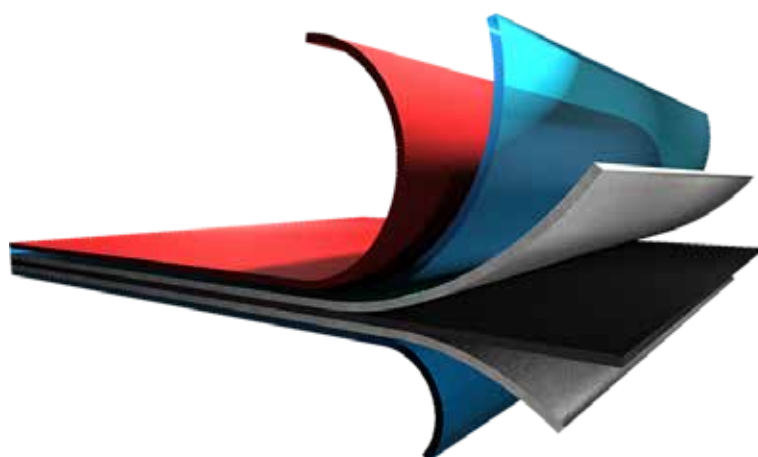
| | |
|--------------------|--------------|
| Length | 0.5 - 5 m |
| Range | up to 0.5 m |
| Steel thickness | 0.5 - 0.7 mm |
| Aluminum thickness | 0.6 - 0.8 mm |



HORIZONTAL INSTALLATION EXAMPLE



VERTICAL INSTALLATION EXAMPLE



Protective layers

- Polyester coating 20 μ
- Primer 7 μ
- Zinc coating 140gr/m²
- Steel base DX51 (0.5mm)

*The values can be changed upon request

Standard colours chart

| Colour | RAL number | Metal fence elements | |
|--------------------|------------------|----------------------|-----------|
| | | Galvanized | Aluminium |
| Silver Mettalic | 9006 | • | • |
| Dark Gray | 9007 | | |
| Alpine White | 9002 | • | • |
| Dirty White | 9003 | • | • |
| Anthracite | 7016 | • | • |
| Black | 9005 | • | • |
| Earth Brown | 8019 | • | • |
| Fire Red | 3020 | • | • |
| Brick Red | 3009 | • | • |
| Bright Green | 6018 | • | • |
| Steppe Green | 6021 | | |
| Forest Green | 6028 | • | • |
| Sea Blue | 5010 | • | • |
| Brick Red matte | 3009 | • | • |
| Amazon Green matte | 6020 | • | |
| Anthracite matte | 7016 | • | • |
| Earth Brown matte | 8017 | • | • |
| Black matte | 9005 | • | |
| Titanium zinc | | | |
| Laminated foil | Wood imitation | • | • |
| Laminated foil | Cooper imitation | | |

Custom colors available on request



PANKOMERC

Sheet metal wizards®

Knjaza Miloša 92/1
(PO BOX 67)
31 210 Požega, Serbia

Wholesale

tel. +381 (0)31 812 225
fax +381 (0)31 3716 091

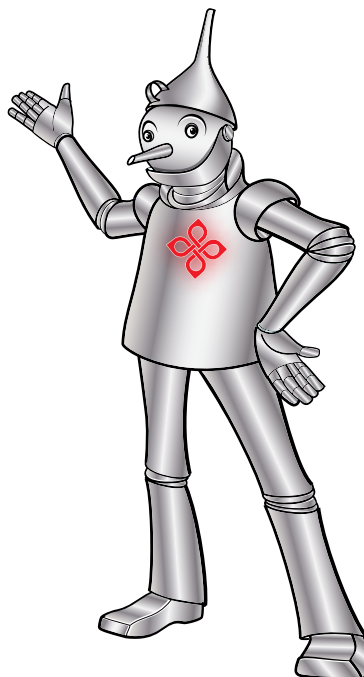
Retail and logistics

tel. +381 (0)31 825 058
fax +381 (0)31 825 458
e-mail: info@pankomerc.com

Belgrade office

Mije Kovačevića 10a
(Warehouse Inkotehna)
11 000 Belgrade
tel. +381 (0)11 27 64 491
e-mail: beograd@pankomerc.com

www.pankomerc.com



RoHS