



PAN-T150

Product technical features

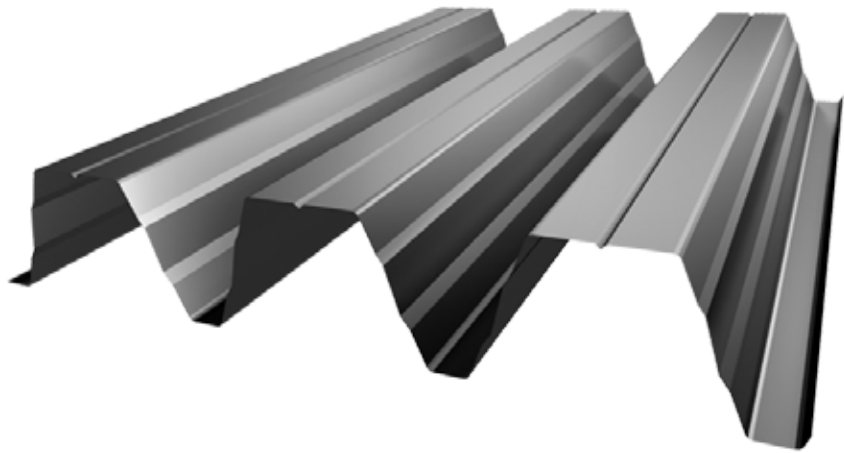


PANKOMERC
Sheet metal wizards®

Pan-T150

Pan-T150 is strongest profile in T series. It covers spans over 8 meters with ease. It is used as roofing profile, supporting base for sandwich panels, roof liquid plastics, insulation layers but also for concrete molding.

This product can be made of galvanized steel sheet metal.



The product can be perforated

Product features

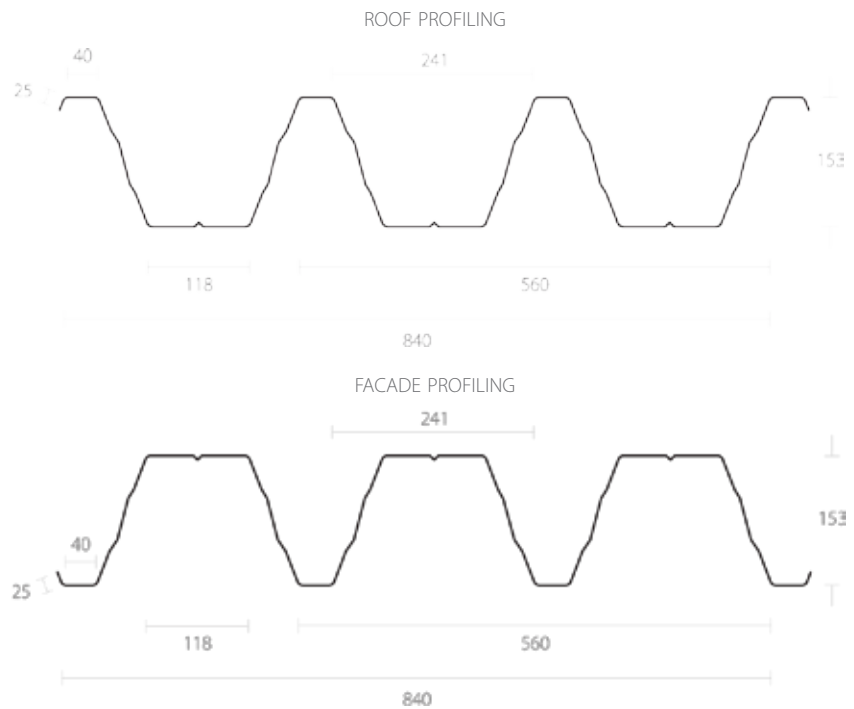
Profile length	0.5 - 17 m
Profile range	up to 9.85 m
Steel thickness	0.75 - 1.25 mm



Weight table

Thickness	Weight (m ²)
0.75	10.70
0.88	12.60
1.0	14.30
1.25	17.85

Galvanized Aluminium



Standard colours chart

Colour	RAL number	Trapezoidal metal sheet PAN-T150	
		Galvanized	
Silver Mettalic	9006	•	
Alpine White	9002	•	
Non-ferrous	-	•	

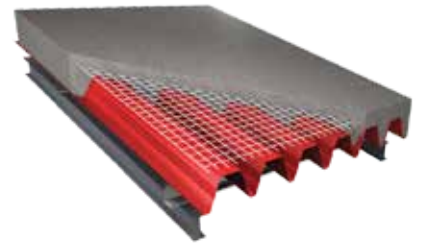
Custom colors available on request



ROOF PROFILING
INSTALLATION EXAMPLE



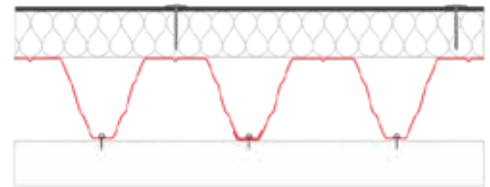
CEILING PROFILING
PVC MEMBRANE ROOF FORMING EXAMPLE



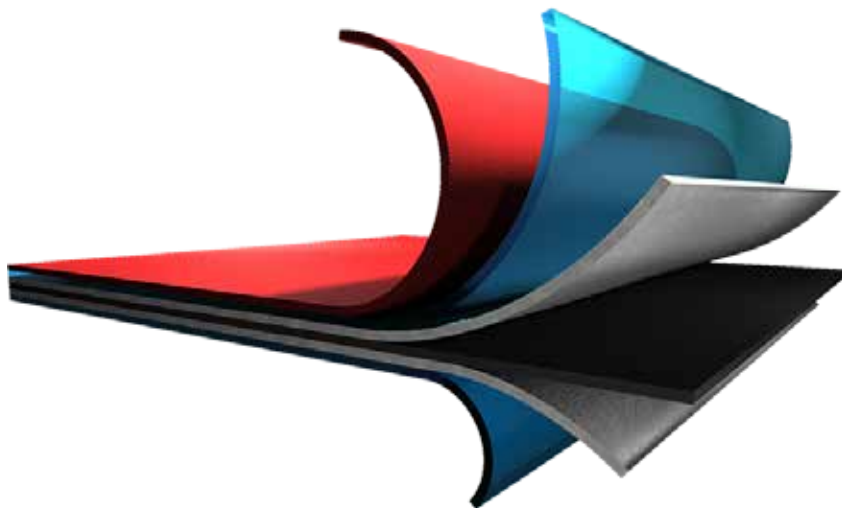
CEILING PROFILING
PRIMER FORMIRANJA MEDUSPRATNE PLOČE



ROOF PROFILING
INSTALLATION CROSS SECTION



CEILING PROFILING
INSTALLATION CROSS SECTION



Protective layers

- Polyester coating 20 μ
- Primer 7 μ
- Zinc coating 140gr/m²
- Steel base DX51 (0,5mm)

*The values can be changed upon request

Load tables

TWO PILLARS			PERMISSIBLE LOAD (KN/M ²)																	
Range (m)			4.50	4.75	5.00	5.25	5.50	5.75	6.00	6.25	6.50	6.75	7.00	7.25	7.50	7.75	8.00	8.25	8.50	8.75
t	kg	max f	Width of reliance on end parts bA=90 mm																	
0.75	10.7	-	3.03	2.87	2.72	2.56	2.33	2.13	1.96	1.8	1.67	1.55	1.44	1.34	1.25	1.17	1.1	1.04	0.98	0.92
		L/150	3.03	2.87	2.72	2.56	2.33	2.12	1.87	1.65	1.47	1.31	1.18	1.06	0.96	0.87	0.79	0.72	0.66	0.6
		L/300	2.21	1.88	1.61	1.39	1.21	1.06	0.93	0.83	0.73	0.66	0.59	0.53	0.48	0.43	0.39	0.36	0.33	0.3
		L/500	1.33	1.13	0.97	0.84	0.73	0.64	0.56	0.5	0.44	0.39	0.35	0.32	0.29	0.26	0.24	0.22	0.2	0.18
0.88	12.6	-	4.35	3.9	3.52	3.19	2.91	2.66	2.45	2.25	2.08	1.93	1.8	1.68	1.57	1.47	1.38	1.29	1.22	1.15
		L/150	4.35	3.9	3.52	3.19	2.8	2.45	2.16	1.91	1.7	1.52	1.36	1.22	1.11	1	0.91	0.83	0.76	0.7
		L/300	2.56	2.18	1.87	1.61	1.4	1.23	1.08	0.96	0.85	0.76	0.68	0.61	0.55	0.5	0.46	0.42	0.38	0.35
		L/500	1.54	1.31	1.12	0.97	0.84	0.74	0.65	0.57	0.51	0.46	0.41	0.37	0.33	0.3	0.27	0.25	0.23	0.21
1.00	14.3	-	5.15	4.62	4.17	3.78	3.45	3.15	2.9	2.67	2.47	2.29	2.13	1.98	1.85	1.74	1.63	1.53	1.44	1.36
		L/150	5.15	4.62	4.17	3.63	3.16	2.77	2.43	2.15	1.91	1.71	1.53	1.38	1.25	1.13	1.03	0.94	0.86	0.78
		L/300	2.88	2.45	2.1	1.82	1.58	1.36	1.22	1.08	0.96	0.85	0.77	0.69	0.62	0.56	0.51	0.47	0.43	0.39
		L/500	1.73	1.47	1.26	1.09	0.95	0.83	0.73	0.65	0.57	0.51	0.46	0.41	0.37	0.34	0.31	0.28	0.26	0.24
1.25	17.9	-	6.49	5.83	5.26	4.77	4.35	3.98	3.65	3.36	3.11	2.88	2.68	2.5	2.34	2.19	2.05	1.93	1.82	1.72
		L/150	6.49	5.83	5.26	4.58	3.99	3.49	3.07	2.72	2.42	2.16	1.93	1.74	1.57	1.43	1.3	1.18	1.08	0.99
		L/300	3.64	3.1	2.65	2.29	1.99	1.74	1.54	1.36	1.21	1.08	0.97	0.87	0.79	0.71	0.65	0.59	0.54	0.5
		L/500	2.18	1.86	1.59	1.36	1.2	1.05	0.92	0.82	0.72	0.65	0.58	0.52	0.47	0.43	0.39	0.35	0.32	0.3
1.50	21.5	-	7.83	7.03	6.34	5.75	5.24	4.8	4.41	4.06	3.75	3.48	3.24	3.02	2.82	2.64	2.48	2.33	2.2	2.07
		L/150	7.83	7.03	6.34	5.53	4.81	4.21	3.7	3.28	2.91	2.6	2.33	2.1	1.9	1.72	1.56	1.42	1.3	1.19
		L/300	4.39	3.73	3.2	2.76	2.4	2.1	1.85	1.64	1.46	1.3	1.17	1.05	0.95	0.86	0.78	0.71	0.65	0.6
		L/500	2.63	2.24	1.92	1.66	1.44	1.26	1.11	0.98	0.87	0.78	0.7	0.63	0.57	0.52	0.47	0.43	0.39	0.36

THREE PILLARS			PERMISSIBLE LOAD (KN/M ²)																	
Range (m)			4.50	4.75	5.00	5.25	5.50	5.75	6.00	6.25	6.50	6.75	7.00	7.25	7.50	7.75	8.00	8.25	8.50	8.75
t	kg	max f	Width of reliance on end parts bA=90 mm																	
0.75	10.7	-	2.49	2.3	2.13	1.98	1.85	1.73	1.62	1.52	1.42	1.34	1.26	1.19	1.13	1.07	1.01	0.96	0.92	0.87
		L/150	2.49	2.3	2.13	1.98	1.85	1.73	1.62	1.52	1.42	1.34	1.26	1.19	1.13	1.07	1.01	0.96	0.92	0.87
		L/300	2.49	2.3	2.13	1.98	1.85	1.73	1.62	1.52	1.42	1.34	1.26	1.19	1.13	1.04	0.95	0.86	0.79	0.72
		L/500	2.49	2.3	2.13	1.98	1.75	1.53	1.35	1.19	1.06	0.95	0.85	0.76	0.69	0.63	0.57	0.52	0.47	0.43
.88	12.6	-	3.52	3.25	3.01	2.8	2.61	2.44	2.28	2.14	2.01	1.89	1.79	1.69	1.59	1.51	1.43	1.36	1.29	1.23
		L/150	3.52	3.25	3.01	2.8	2.61	2.44	2.28	2.14	2.01	1.89	1.79	1.69	1.59	1.51	1.43	1.36	1.29	1.23
		L/300	3.52	3.25	3.01	2.8	2.61	2.44	2.28	2.14	2.01	1.83	1.64	1.47	1.33	1.21	1.1	1	0.92	0.84
		L/500	3.52	3.15	2.7	2.33	2.03	1.77	1.56	1.38	1.23	1.1	0.98	0.88	0.8	0.72	0.66	0.6	0.55	0.5
1.00	14.3	-	4.46	4.12	3.82	3.55	3.31	3.09	2.9	2.72	2.55	2.4	2.27	2.14	2.02	1.92	1.82	1.71	1.61	1.52
		L/150	4.46	4.12	3.82	3.55	3.31	3.09	2.9	2.72	2.55	2.4	2.27	2.14	2.02	1.92	1.82	1.71	1.61	1.52
		L/300	4.46	4.12	3.82	3.55	3.31	3.09	2.9	2.59	2.31	2.06	1.85	1.66	1.5	1.36	1.24	1.13	1.03	0.95
		L/500	4.17	3.55	3.04	2.63	2.28	2	1.76	1.56	1.38	1.24	1.11	1	0.9	0.82	0.74	0.68	0.62	0.57
1.25	17.9	-	5.63	5.21	4.82	4.48	4.18	3.9	3.65	3.43	3.22	3.03	2.86	2.7	2.56	2.42	2.29	2.15	2.03	1.91
		L/150	5.63	5.21	4.82	4.48	4.18	3.9	3.65	3.43	3.22	3.03	2.86	2.7	2.56	2.42	2.29	2.15	2.03	1.91
		L/300	5.63	5.21	4.82	4.48	4.18	3.9	3.65	3.27	2.91	2.6	2.33	2.1	1.89	1.72	1.56	1.42	1.3	1.19
		L/500	5.26	4.47	3.84	3.31	2.88	2.52	2.22	1.96	1.75	1.56	1.4	1.26	1.14	1.03	0.94	0.85	0.78	0.72
1.50	21.5	-	6.79	6.27	5.82	5.4	5.04	4.7	4.4	4.13	3.88	3.65	3.45	3.26	3.08	2.92	2.76	2.6	2.45	2.31
		L/150	6.79	6.27	5.82	5.4	5.04	4.7	4.4	4.13	3.88	3.65	3.45	3.26	3.08	2.92	2.76	2.6	2.45	2.31
		L/300	6.79	6.27	5.82	5.4	5.04	4.7	4.4	3.95	3.51	3.13	2.81	2.53	2.28	2.07	1.88	1.72	1.57	1.44
		L/500	6.34	5.39	4.62	3.99	3.47	3.04	2.68	2.37	2.11	1.88	1.69	1.52	1.37	1.24	1.13	1.03	0.94	0.86

FOUR PILLARS			PERMISSIBLE LOAD (KN/M ²)																	
Range (m)			4.50	4.75	5.00	5.25	5.50	5.75	6.00	6.25	6.50	6.75	7.00	7.25	7.50	7.75	8.00	8.25	8.50	8.75
t	kg	max f	Width of reliance on end parts bA=90 mm																	
0.75	10.7	-	2.96	2.73	2.54	2.36	2.21	2.06	1.93	1.8	1.67	1.58	1.51	1.44	1.36	1.28	1.2	1.13	1.07	1.01
		L/150	2.96	2.73	2.54	2.36	2.21	2.06	1.93	1.8	1.67	1.58	1.51	1.44	1.36	1.28	1.2	1.13	1.07	1.01
		L/300	2.96	2.73	2.54	2.36	2.21	2	1.76	1.56	1.39	1.24	1.11	1	0.9	0.82	0.74	0.68	0.62	0.57
		L/500	2.51	2.13	1.83	1.58	1.37	1.2	1.06	0.94	0.83	0.74	0.67	0.6	0.54	0.49	0.45	0.41	0.37	0.34
0.88	12.6	-	4.17	3.86	3.52	3.19	2.91	2.66	2.53	2.41	2.31	2.14	1.99	1.85	1.73	1.62	1.52	1.43	1.35	1.27
		L/150	4.17	3.86	3.52	3.19	2.91	2.66	2.53	2.41	2.31	2.14	1.99	1.85	1.73	1.62	1.52	1.43	1.35	1.27
		L/300	4.17	3.86	3.52	3.04	2.65	2.32	2.04	1.8	1.6	1.43	1.28	1.16	1.04	0.95	0.86	0.78	0.72	0.66
		L/500	2.9	2.47	2.11	1.83	1.59	1.39	1.22	1.08	0.96	0.86	0.77	0.69	0.63	0.57	0.52	0.47	0.43	0.39
1.00	14.3	-	5.15	4.62	4.17	3.78	3.53	3.19	2.98	2.75	2.55	2.37	2.21	2.07	1.94	1.82	1.71	1.61	1.52	
		L/150	5.15	4.62	4.17	3.78	3.53	3.19	2.98	2.75	2.55	2.37	2.21	2.07	1.94	1.82	1.71	1.61	1.48	
		L/300	5.15	4.62	3.97	3.43	2.98	2.61	2.3	2.03	1.81	1.61	1.45	1.3	1.18	1.07	0.97	0.88	0.81	0.74
		L/500	3.27	2.78	2.38	2.06	1.79	1.57	1.38	1.22	1.08	0.97	0.87	0.78	0.71	0.64	0.58	0.53	0.48	0.44
1.25	17.9	-	6.49	5.83	5.26	4.77	4.44	4.23	4.03	3.75	3.47	3.22	2.99	2.79	2.61	2.44	2.29	2.15	2.03	1.91
		L/150	6.49	5.83	5.26	4.77	4.44	4.23	4.03	3.75	3.47	3.22	2.99	2.79	2.61	2.44	2.29	2.15	2.03	1.87
		L/300	6.49	5.83	5.01	4.33	3.76	3.29	2.9	2.57	2.28	2.04	1.83	1.64	1.48	1.35	1.22	1.12	1.02	0.93
		L/500	4.12	3.51	3.01	2.6	2.26	1.98	1.74	1.54	1.37	1.22	1.1	0.99	0.89	0.81	0.73	0.67	0.61	0.56
1.50	21.5	-	7.83	7.03	6.34	5.75	5.36	5.1	4.86	4.53	4.19	3.88	3.61	3.36	3.14	2.94	2.76	2.6	2.45	2.31
		L/150	7.83	7.03	6.34	5.75	5.36	5.1	4.86	4.53	4.19	3.88	3.61	3.36	3.14	2.94	2.76	2.6	2.45	2.25
		L/300	7.83	7.03	6.04	5.22	4.54	3.97	3.5	3.09	2.75	2.46	2.2	1.98	1.79	1.62	1.47	1.34	1.23	1.13
		L/500	4.97	4.23	3.62	3.13	2.72	2.38	2.1	1.86	1.65	1.47	1.32	1.19	1.07	0.97	0.88	0.81	0.74	0.68



PANKOMERC

Sheet metal wizards®

Knjaza Miloša 92/1
(PO BOX 67)
31 210 Požega, Serbia

Wholesale

tel. +381 (0)31 812 225
fax +381 (0)31 3716 091

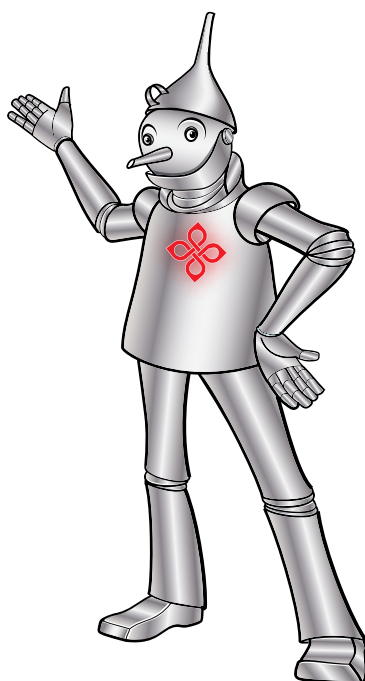
Retail and logistics

tel. +381 (0)31 825 058
fax +381 (0)31 825 458
e-mail: info@pankomerc.com

Belgrade office

Mije Kovačevića 10a
(Warehouse Inkotehna)
11 000 Belgrade
tel. +381 (0)11 27 64 491
e-mail: beograd@pankomerc.com

www.pankomerc.com



RoHS