



PAN-T60-210

Product technical features



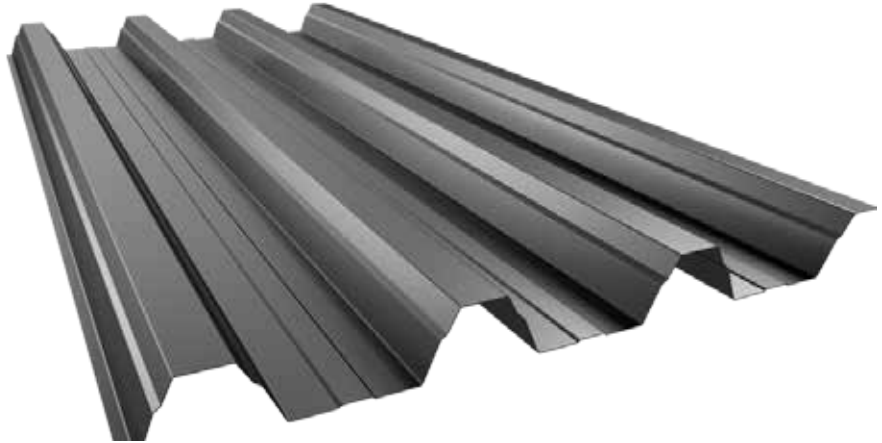
PANKOMERC

Sheet metal wizards®

Pan-T60-210

Pan-T60-210 is 60 mm high profile and has rigidity for overcoming support distances over 4 meters.

It could be used as concrete molding profile or as Pan X sandwich system component.



Antikondenz felt can be placed



The product can be perforated



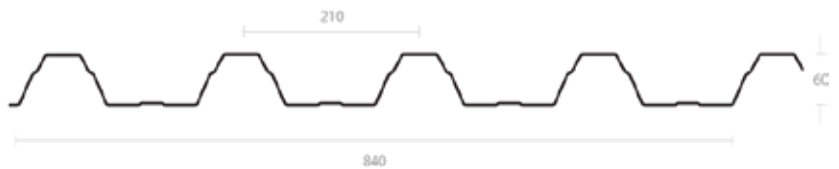
The product can be made of transparent polycarbonate

Product features

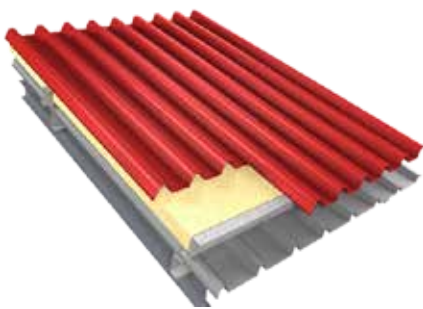
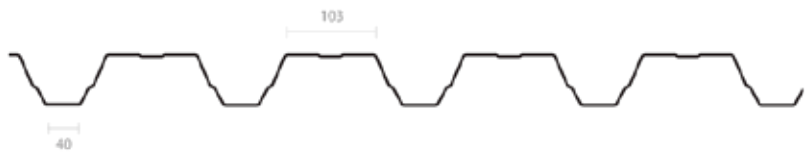
Profile length	0.5 - 17 m
Profile range	up to 4.75 m
Steel thickness	0.5 - 1.0 mm
Aluminum thickness	0.6 - 1.0 mm



ROOF PROFILING



FACADE PROFILING



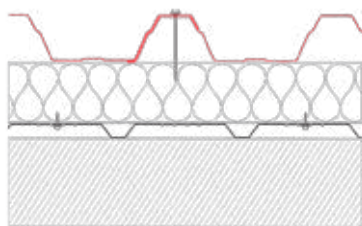
ROOF PROFILING



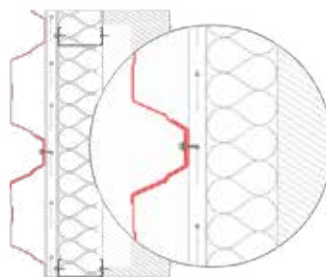
FACADE PROFILING



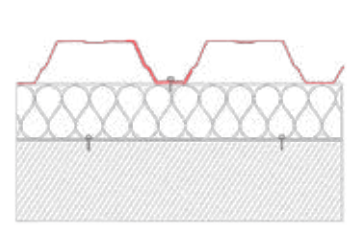
FACADE PROFILING



ROOF PROFILING
INSTALLATION CROSS SECTION



FACADE PROFILING
HORIZONTAL INSTALLATION CROSS SECTION



FACADE PROFILING
VERTICAL INSTALLATION CROSS SECTION

Load tables

TWO PILLARS		DOZVOLJENA NOSIVOST (KN/M ²) URAĐENA NA 1 DUŽNOM METRU / RASTOJANJE IZMEĐU OSLOKACA												
Span (m)		1,00	1,25	1,50	1,75	2,00	2,25	2,50	2,75	3,00	3,25	3,50	3,75	4,00
Thickness (mm)	Line	Line 1=ugib 200 / Line 2=ugib 300												
0,50	1	8,22	5,26	3,65	2,68	2,06	1,62	1,32	1,07	0,83	0,65	0,52	0,42	0,35
	2	8,22	5,26	3,65	2,68	1,86	1,31	0,95	0,72	0,55	0,43	0,35	0,28	0,23
0,60	1	11,57	7,41	5,14	3,78	2,89	2,29	1,85	1,44	1,11	0,87	0,70	0,57	0,47
	2	11,57	7,41	5,14	3,73	2,50	1,75	1,28	0,96	0,07	0,58	0,47	0,38	0,31
0,70	1	15,37	9,84	6,83	5,02	3,84	3,04	2,45	1,84	1,41	1,11	0,89	0,72	0,60
	2	15,37	9,84	6,83	4,75	3,18	2,23	1,63	1,23	0,94	0,74	0,59	0,48	0,39
0,80	1	18,95	12,13	8,42	6,19	4,74	3,74	2,94	2,21	1,70	1,34	1,07	0,87	0,72
	2	18,95	12,13	8,42	5,72	3,83	2,69	1,96	1,47	1,13	0,89	0,71	0,58	0,48
1,00	1	25,23	16,15	11,21	8,24	6,31	4,98	3,85	2,89	2,22	1,75	1,40	1,14	0,94
	2	25,23	16,15	11,21	7,48	5,01	3,52	2,56	1,93	1,48	1,17	0,93	0,76	0,63

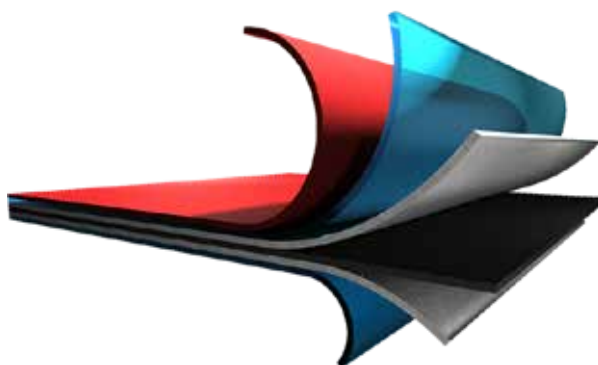
THREE PILLARS		DOZVOLJENA NOSIVOST (KN/M ²) URAĐENA NA 1 DUŽNOM METRU / RASTOJANJE IZMEĐU OSLOKACA												
Span (m)		1,00	1,25	1,50	1,75	2,00	2,25	2,50	2,75	3,00	3,25	3,50	3,75	4,00
Thickness (mm)	Line	Line 1=ugib 200 / Line 2=ugib 300												
0,50	1	8,38	5,37	3,73	2,74	2,09	1,65	1,34	1,10	0,93	0,79	0,68	0,59	0,52
	2	8,38	5,37	3,72	2,74	2,09	1,65	1,34	1,10	0,93	0,79	0,68	0,59	0,52
0,60	1	11,85	7,58	5,26	3,87	2,96	2,34	1,89	1,56	1,32	1,12	0,96	0,84	0,74
	2	11,85	7,58	5,26	3,87	2,96	2,34	1,89	1,56	1,32	1,12	0,96	0,84	0,74
0,70	1	15,03	9,62	6,67	4,90	3,75	2,96	2,40	1,98	1,67	1,42	1,22	1,06	0,94
	2	15,03	9,62	6,67	4,90	3,75	2,96	2,40	1,98	1,67	1,42	1,22	1,06	0,94
0,80	1	18,05	11,55	8,02	5,89	4,51	3,56	2,88	2,38	2,00	1,70	1,47	1,28	1,13
	2	18,05	11,55	8,02	5,89	4,51	3,56	2,88	2,38	2,00	1,70	1,47	1,28	1,13
1,00	1	23,17	14,83	10,30	7,56	5,79	4,57	3,70	3,06	2,57	2,19	1,89	1,64	1,44
	2	23,17	14,83	10,30	7,56	5,79	4,57	3,70	3,06	2,57	2,19	1,89	1,64	1,44

FOUR PILLARS		DOZVOLJENA NOSIVOST (KN/M ²) URAĐENA NA 1 DUŽNOM METRU / RASTOJANJE IZMEĐU OSLOKACA												
Span (m)		1,00	1,25	1,50	1,75	2,00	2,25	2,50	2,75	3,00	3,25	3,50	3,75	4,00
Thickness (mm)	Line	Line 1=ugib 200 / Line 2=ugib 300												
0,50	1	10,48	6,70	4,65	3,42	2,62	2,07	1,67	1,38	1,16	0,99	0,85	0,74	0,65
	2	10,48	6,70	4,65	3,42	2,62	2,07	1,67	1,37	1,06	0,83	0,67	0,54	0,45
0,60	1	14,82	9,48	6,58	4,83	3,70	2,92	2,37	1,96	1,64	1,40	1,21	1,05	0,90
	2	14,82	9,48	6,58	4,83	3,70	2,92	2,37	1,85	1,42	1,21	0,89	0,73	0,60
0,70	1	18,78	12,02	8,34	6,13	4,69	3,71	3,00	2,48	2,08	1,78	1,53	1,33	1,15
	2	18,78	12,02	8,34	6,13	4,69	3,71	3,00	2,35	1,81	1,42	1,14	0,93	0,76
0,80	1	22,56	14,44	10,03	7,36	5,63	4,45	3,60	2,98	2,50	2,13	1,84	1,60	1,38
	2	22,58	14,44	10,03	7,36	5,63	4,45	3,60	2,83	2,18	1,71	1,37	1,12	0,92
1,00	1	28,96	18,53	12,87	9,45	7,24	5,72	4,63	3,83	3,21	2,74	2,36	2,06	1,80
	2	28,96	18,53	12,87	9,45	7,24	5,72	4,63	3,71	2,85	2,25	1,80	1,46	1,20

Protective layers

- Polyester coating 20μ
- Primer 7μ
- Zinc coating 140gr/m²
- Steel base DX51 (0.5mm)

* The values can be changed upon request



Standard colours chart

Colour	RAL number	PAN-T60	
		Galvanized	Aluminium
Silver Mettalic	9006	•	•
Dark Gray	9007	•	•
Alpine White	9002	•	•
Dirty White	9003	•	•
Anthracite	7016	•	•
Black	9005	•	•
Earth Brown	8019	•	•
Fire Red	3020	•	•
Brick Red	3009	•	•
Bright Green	6018	•	•
Steppe Green	6021		•
Forest Green	6028	•	•
Sea Blue	5010	•	•
Brick Red matte	3009	•	
Amazon Green matte	6020	•	
Anthracite matte	7016	•	•
Earth Brown matte	8017	•	•
Black matte	9005	•	
Titanium zinc			
Laminated foil	Wood imitation	•	
Laminated foil	Cooper imitation	•	•

Custom colors available on request



PANKOMERC

Sheet metal wizards®

Knjaza Miloša 92/1
(PO BOX 67)
31 210 Požega, Serbia

Wholesale

tel. +381 (0)31 812 225
fax +381 (0)31 3716 091

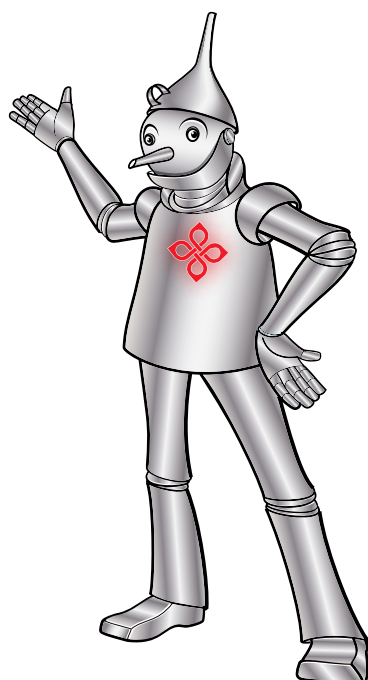
Retail and logistics

tel. +381 (0)31 825 058
fax +381 (0)31 825 458
e-mail: info@pankomerc.com

Belgrade office

Mije Kovačevića 10a
(Warehouse Inkotehna)
11 000 Belgrade
tel. +381 (0)11 27 64 491
e-mail: beograd@pankomerc.com

www.pankomerc.com



RoHS