



# PAN-LS27

Product technical features

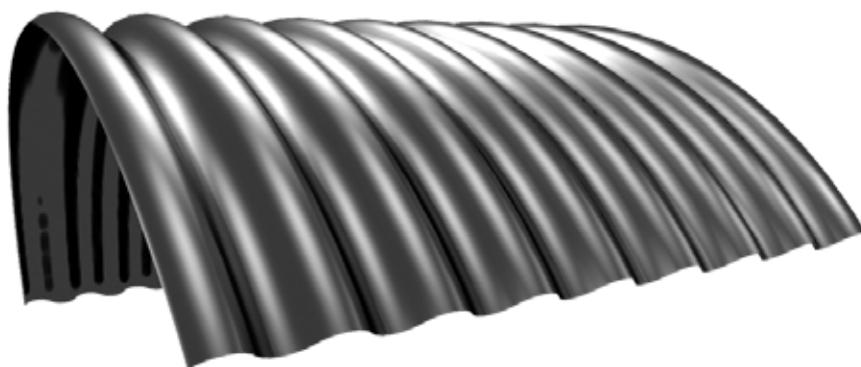


**PANKOMERC**  
Sheet metal wizards®

# Pan-LS27

Pan-LS27 is curved sinus roofing profile mostly used as an element of hangar construction

It also can be used as curved wall elements of grain silos with an extraordinary load bearing capacity. These profiles are delivered on site in prefabricated radius so no further modification is needed.



Antikondenz felt can be placed

ROOF PROFILING



FACADE PROFILING



## Product features

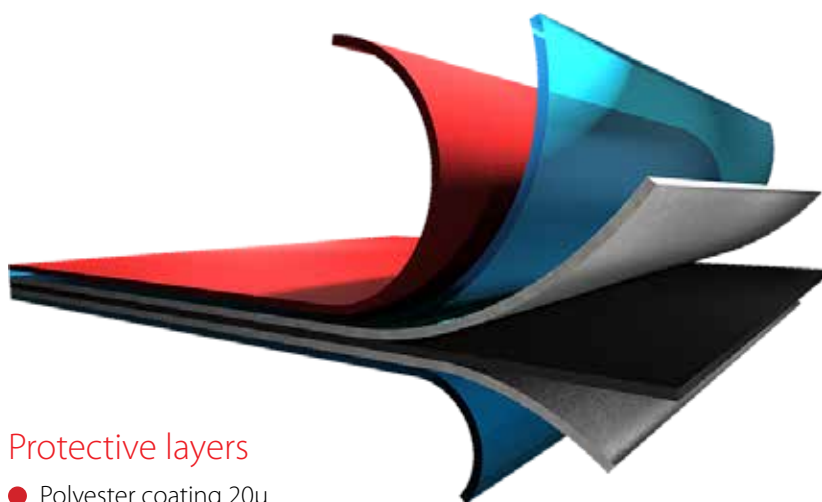
Profile length	0.2 - 12 m
Profile range	up to 3.3 m
Steel thickness	0.5 - 1.5 mm
Aluminum thickness	0.6 - 1.5 mm



## Weight table

Thickness	Weight (m <sup>2</sup> )	
0.5	5.0	x
0.6	6.0	2.03
0.7	7.0	2.41
0.8	8.0	2.40
1.0	10.0	3.37
1.2	12.0	4.05
1.5	15.0	5.06

Galvanized Aluminium



## Protective layers

- Polyester coating 20 $\mu$
- Primer 7 $\mu$
- Zinc coating 140gr/m<sup>2</sup>
- Steel base DX51 (0.5mm)

\* The values can be changed upon request



SILO FORMATING EXAMPLE

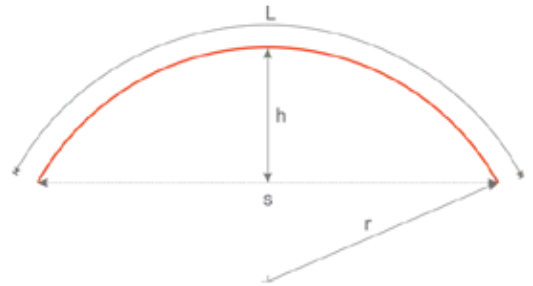
### Interlocking Method

p = overlap (min 20 cm)  
S1, S2 = segments



### Arched Roof Parameters

L = arch length | h = roof height  
r = radius min 2 m | s = span



## Load tables

LOAD TABLE PAN-S27- GALVANIZED					Support beam span (l) for max deflection $f_{max} \leq l/200$ and allowed tension $\Sigma f_{doz} = 14 \text{ kN/cm}^2$		
Thick- ness (mm)	Profile length (cm <sup>2</sup> /m)	Profile length (cm <sup>2</sup> /m)	Load (kN/m <sup>2</sup> )	▲▲▲▲			
				▲▲	▲▲▲	▲▲▲▲	
0.60	7.18	5.18	1.00	1.80	2.41	2.24	
			1.25	1.67	2.15	2.08	
			1.50	1.57	1.97	1.95	
			1.75	1.49	1.82	1.85	
0.80	9.53	6.86	1.00	1.97	2.68	2.46	
			1.25	1.83	2.48	2.28	
			1.50	1.72	2.26	2.15	
			1.75	1.64	2.10	2.04	
1.00	11.92	8.51	1.00	2.13	2.89	2.65	
			1.25	1.97	2.68	2.46	
			1.50	1.86	2.52	2.31	
			1.75	1.76	2.33	2.20	
1.20	14.30	10.14	1.00	2.26	3.07	2.81	
			1.25	2.10	2.85	2.61	
			1.50	1.97	2.68	2.46	
			1.75	1.87	2.55	2.33	
1.50	17.88	12.54	1.00	2.43	3.30	3.03	
			1.25	2.26	3.07	2.81	
			1.50	2.13	2.89	2.65	
			1.75	1.93	2.74	2.51	

LOAD TABLE PAN-S27- ALUMINIUM					Support beam span (l) for max deflection $f_{max} \leq l/200$ and allowed tension $\Sigma f_{doz} = 14 \text{ kN/cm}^2$		
Thick- ness (mm)	Profile length (cm <sup>2</sup> /m)	Profile length (cm <sup>2</sup> /m)	Load (kN/m <sup>2</sup> )	▲▲▲▲			
				▲▲	▲▲▲	▲▲▲▲	
0.60	7.18	5.18	1.00	1.24	1.64	1.55	
			1.25	1.16	1.47	1.44	
			1.50	1.09	1.34	1.35	
			1.75	1.03	1.24	1.29	
0.70	9.53	6.86	1.00	1.30	1.75	1.62	
			1.25	1.21	1.59	1.51	
			1.50	1.14	1.44	1.42	
			1.75	1.08	1.33	1.35	
0.8	11.92	8.51	1.00	1.37	1.86	1.70	
			1.25	1.27	1.69	1.59	
			1.50	1.20	1.54	1.49	
			1.75	1.14	1.43	1.41	
1.0	17.88	12.54	1.00	1.47	2.00	1.83	
			1.25	1.37	1.86	1.70	
			1.50	1.29	1.72	1.60	
			1.75	1.22	1.59	1.52	
1.50	17.88	12.54	1.00	1.67	2.29	2.10	
			1.25	1.57	2.13	1.95	
			1.50	1.47	2.00	1.84	
			1.75	1.40	1.90	1.74	

▲▲▲▲ No of supports

## Standard colours chart

Colour	RAL number	PAN-LS27	
		Galvanized	Aluminium
Silver Mettalic	9006	•	•
Dark Gray	9007	•	•
Alpine White	9002	•	•
Dirty White	9003	•	•
Anthracite	7016	•	•
Black	9005	•	•
Earth Brown	8019	•	•
Fire Red	3020	•	•
Brick Red	3009	•	•
Bright Green	6018	•	•
Steppe Green	6021		•
Forest Green	6028	•	•
Sea Blue	5010	•	•
Brick Red matte	3009	•	
Amazon Green matte	6020	•	
Anthracite matte	7016	•	•
Earth Brown matte	8017	•	•
Black matte	9005	•	
Titanium zinc			
Laminated foil	Wood imitation		
Laminated foil	Cooper imitation		

Custom colors available on request



**PANKOMERC**

Sheet metal wizards®

Knjaza Miloša 92/1  
(PO BOX 67)  
31 210 Požega, Serbia

### Wholesale

tel. +381 (0)31 812 225  
fax +381 (0)31 3716 091

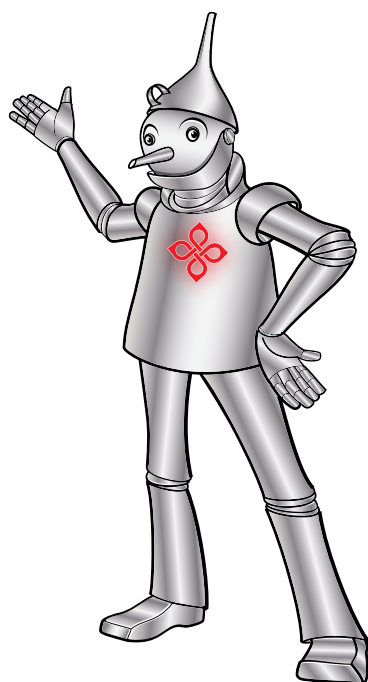
### Retail and logistics

tel. +381 (0)31 825 058  
fax +381 (0)31 825 458  
e-mail: info@pankomerc.com

### Belgrade office

Mije Kovačevića 10a  
(Warehouse Inkotehna)  
11 000 Belgrade  
tel. +381 (0)11 27 64 491  
e-mail: beograd@pankomerc.com

[www.pankomerc.com](http://www.pankomerc.com)



**RoHS**