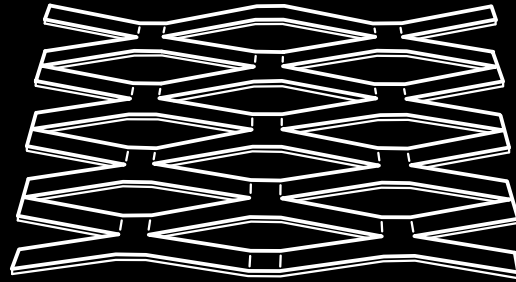


EXPANDED METAL MESHES

CATALOGUE 2015/16



PANKOMERC
Sheet metal wizards®

First 25 years

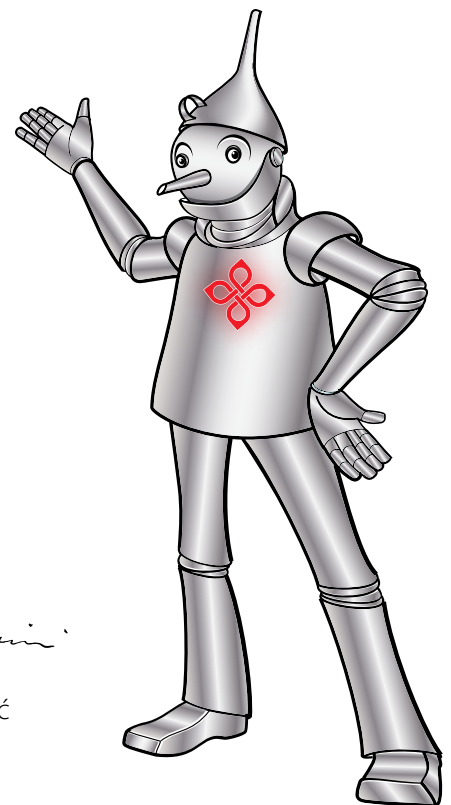
- 1990** On 27th February 1990 Milica and Božidar Panović established Pan Komerc Ltd which dealt with trade in aluminum, copper and zinc plates.
- 1991** Construction of the first hall of 300 m²
- 1993** The first machine for profiling of metal sheet was purchased and processing of nonferrous metals started
- 1994** Construction of the second hall of 390 m²
- 2001** Construction of the third hall of 900 m²
- 2002** Acquisition of advanced machinery for nonferrous metals profiling started
- 2004** Pan Komerc implemented **ISO 9001:2008 quality management system**
- 2005** Construction of the fourth hall of 500 m²
- 2008** Second generation of the Panović family is included in the company management
- 2010** Belgrade branch office is opened
- 2011** Pan Komerc becomes first Serbian company that acquired **CE mark for profiled metal sheets for roofing and facades**
- 2012** Construction of the fifth hall of 1680 m²
- 2013** Pan Komerc **ISO 14001:2004 system environmental protection management**
- 2014** Pan Komerc first appearance at international trade fairs in Hanover and Paris
- 2015** Pan Komerc celebrate 25th anniversary

Pan Commerce currently owns 4,000 m² of indoor space and 2 hectares of open space. It employs 24 workers and distributes its products on markets of Germany, Switzerland, France, Sweden, Austria, Slovenia, Moldova, Croatia, Bosnia, Macedonia, Montenegro and Serbia. Production volume reached 500,000 m² of roof and facade plates with a total annual consumption of 5,000 tons of steel and aluminum sheets. Total turnover of Pan Komerc in 2012 reached 6,000,000 euros.

In past 25 years we have searched a lot. We searched like all those who want to learn, grow and succeed in their intentions. Of course, most of the answers were within ourselves. But what have we found? We believe the very essence of a successful business: strong family foundations, quality of products and services as well as partnership with our customers.

Respecting the past years, we are excited about the fact that we made major steps towards the future and that we can rightfully call ourselves the family enterprise. The second generation of Panović family has the same but improved goal - to last. This contains all principles of our business that 1,500 of our customers throughout Serbia and Europe get to know every day.

We can say that our current path was like a fairy tale. But fairy tales are for the others. We give life to our products by giving them a soul...



Božidar Panović

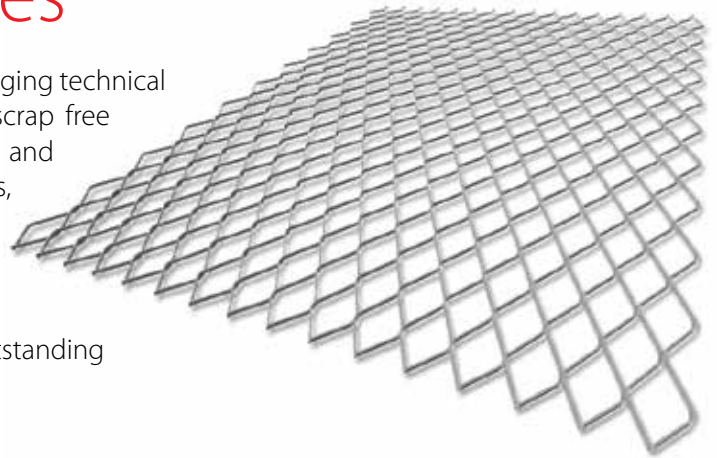
Nikola Panović

Expanded metal meshes

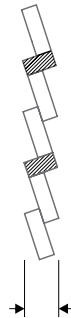
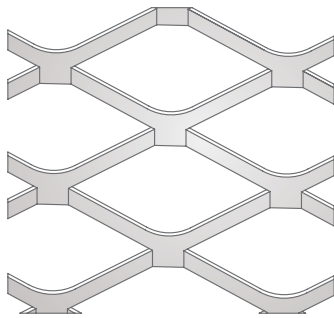
Expanded metal meshes provide the solution for most challenging technical and design tasks. With shape and material flexibility, and scrap free production expanded meshes provide economic, functional and quality product. They are used as metal furniture components, suspended ceilings, fences, facades, filters, shelves, etc.

Basic features of expanded metal meshes are production without scrap and out of various metal and in various dimensions, transparency, conduction of electric current, outstanding mechanical characteristics...

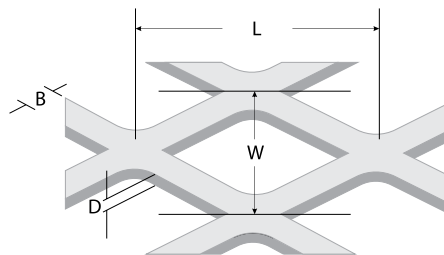
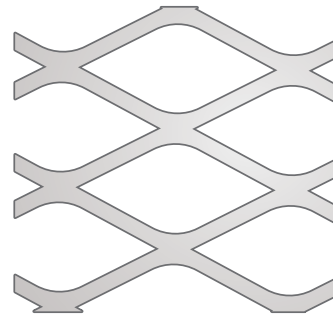
Meshes are produced in rolls or sheets of different formats.



Standard



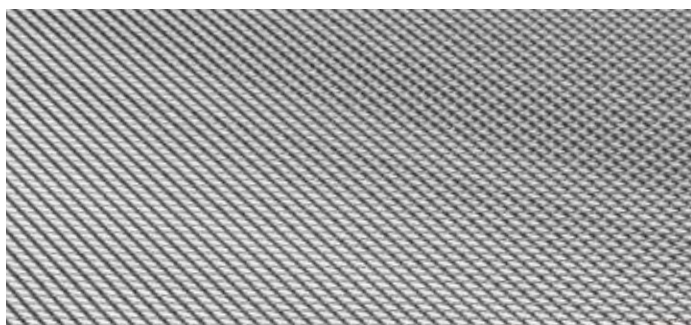
Flattened



L - Length
W - Width
B - Wall thickness
D - Material thickness

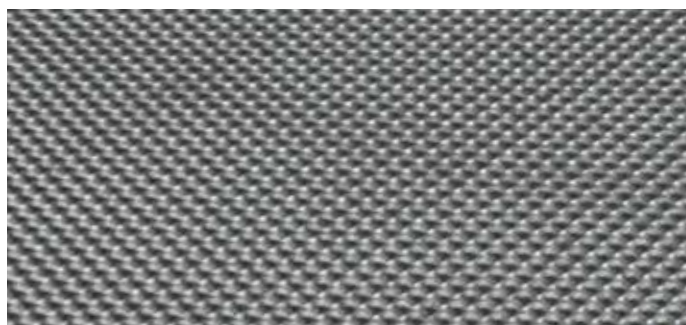


EX 4

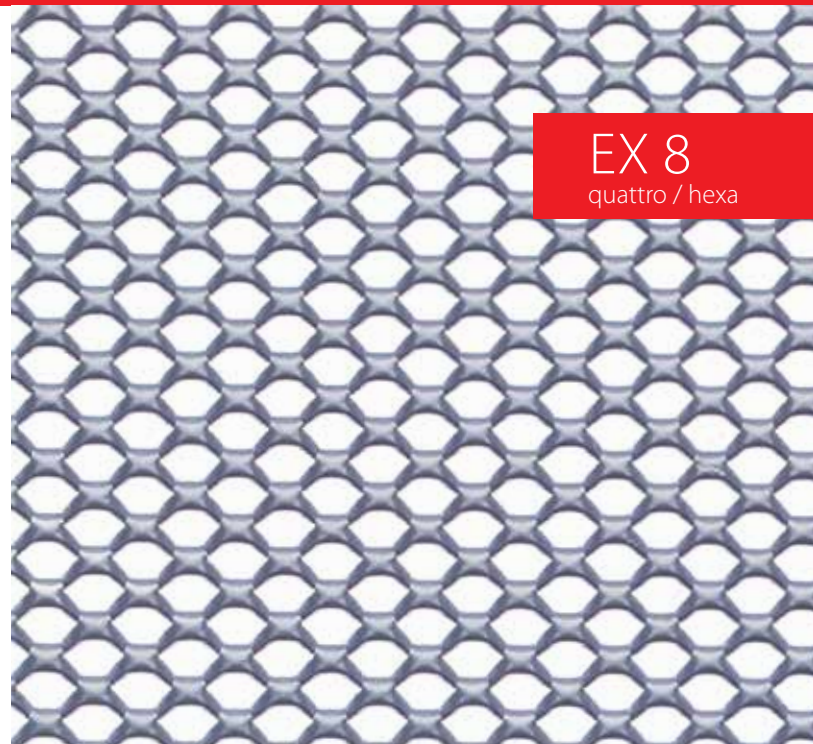
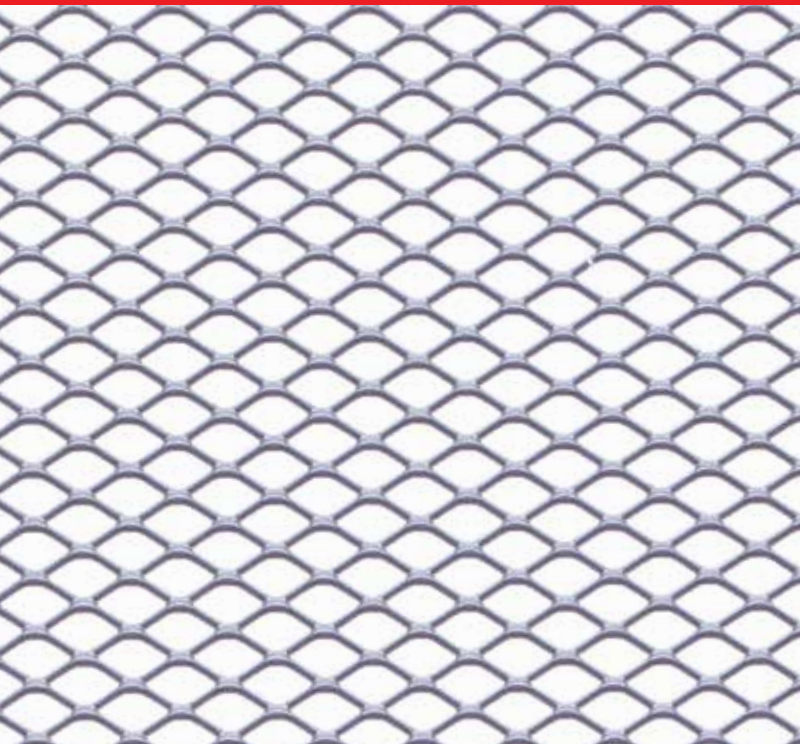


EX4	Thickness (mm)		Transparency	Weight (kg/m ²)		
	wall	material		steel	Al	
Length (L)	4	0.50	0.40	50%	1.60	0.54
Width (W)	2	0.50	0.50	50%	2.00	0.68
Max width	500	0.60	0.60	40%	2.87	0.97
in mm						

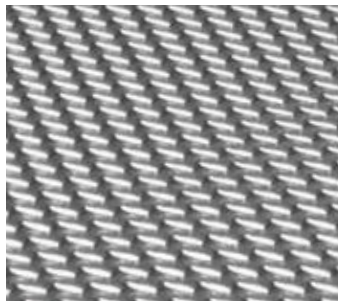
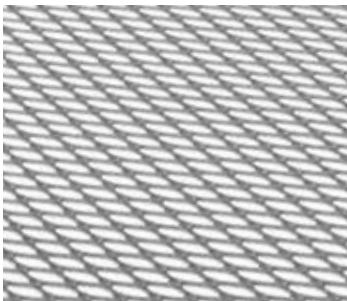
EX 6



EX6		Thickness (mm)		Transparency	Weight (kg/m ²)	
		wall	material		steel	Al
Length (L)	6	0.50	0.50	67%	1.30	0.45
Width (W)	3	0.70	0.50	53%	1.80	0.63
Max width	500	1.00	0.60	33%	3.20	1.08
in mm		1.00	0.70	33%	-	1.26



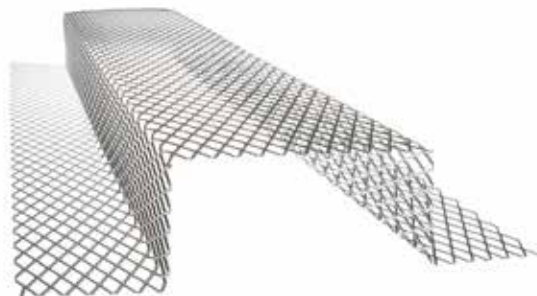
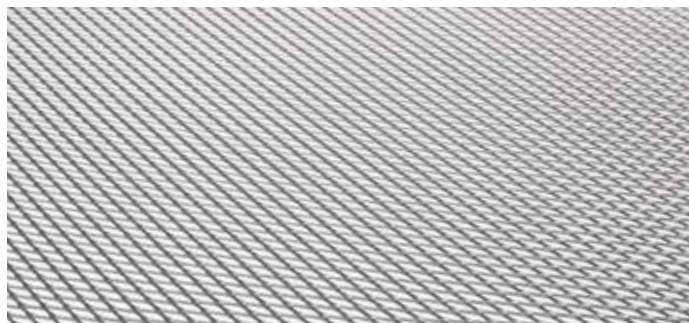
EX 8
quattro / hexa



		Thickness (mm)		Transparency	Weight (kg/m ²)	
		wall	material		steel	Al
EX8 quattro						
Length (L)	8	0.70	0.50	65%	1.40	0.47
Width (W)	4	0.80	0.60	60%	1.90	0.65
Max width	1250	1.00	0.70	50%	2.80	0.95
EX8 hexa						
Length (L)	8	0.70	0.50	65%	1.40	0.47
Width (W)	4	0.80	0.60	60%	1.90	0.65
Max width	1000	1.20	1.00	40%	4.80	1.62
in mm						

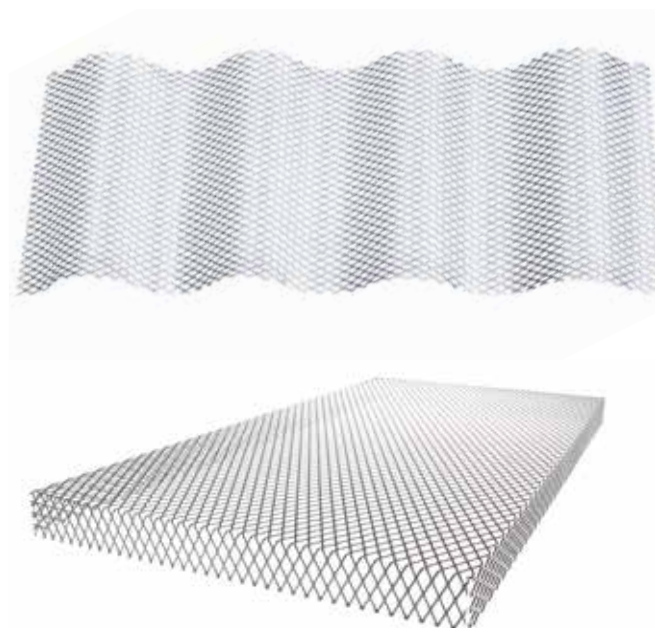
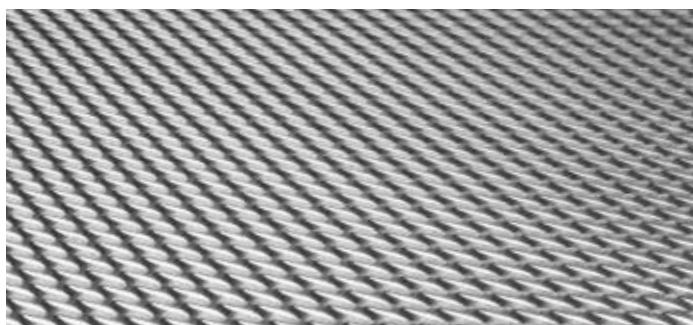


EX 10



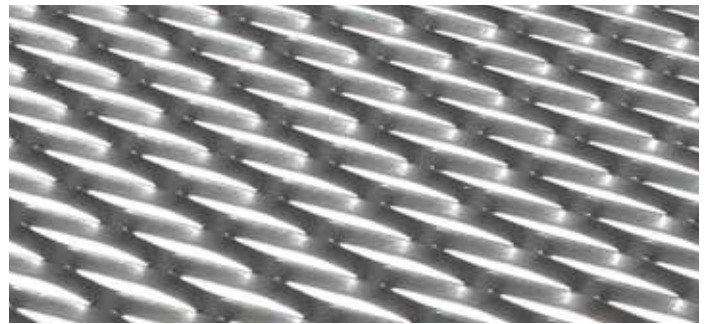
EX10		Thickness (mm)		Transparency	Weight (kg/m ²)	
		wall	material		steel	Al
Length (L)	10	0.70	0.50	72%	1.12	0.38
Width (W)	5	0.80	0.60	68%	1.54	0.52
Max width	1250	1.00	0.70	60%	2.24	0.76
in mm		1.00	0.70	60%	2.24	0.76

EX 16



EX16		Thickness (mm)		Transparency	Weight (kg/m ²)	
		wall	material		steel	Al
Length (L)	16	0.70	0.50	83%	0.70	0.24
Width (W)	8	1.00	0.60	75%	1.20	0.40
Max width	1250	1.20	0.70	70%	1.70	0.57
in mm		1.50	1.00	63%	3.00	1.00
		1.70	1.50	58%	-	1.72

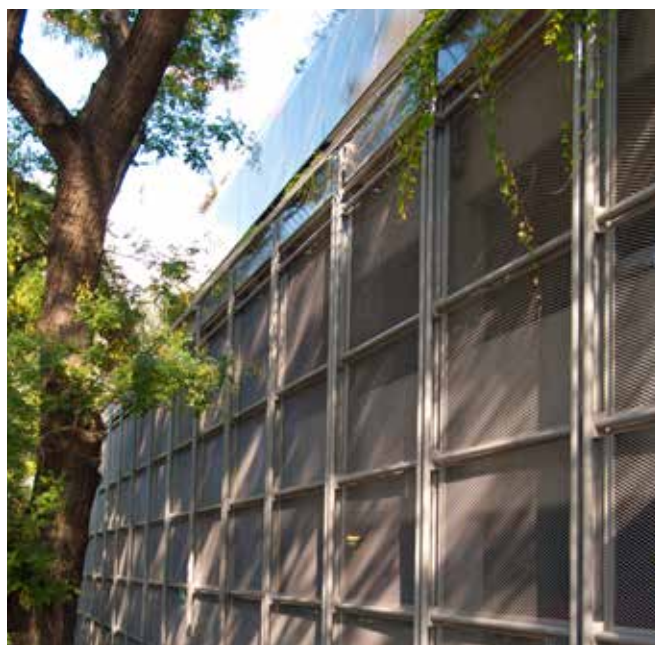
EX 25



EX25		Thickness (mm)		Transparency	Weight (kg/m ²)	
		wall	material		steel	Al
Length (L)	25	1.00	0.60	80%	0.96	0.33
Width (W)	10	1.50	0.80	70%	1.92	0.65
Max width	1250	1.50	1.00	70%	2.40	0.81
in mm		2.00	1.00	60%	3.20	1.01
		3.00	2.00	40%	-	3.23

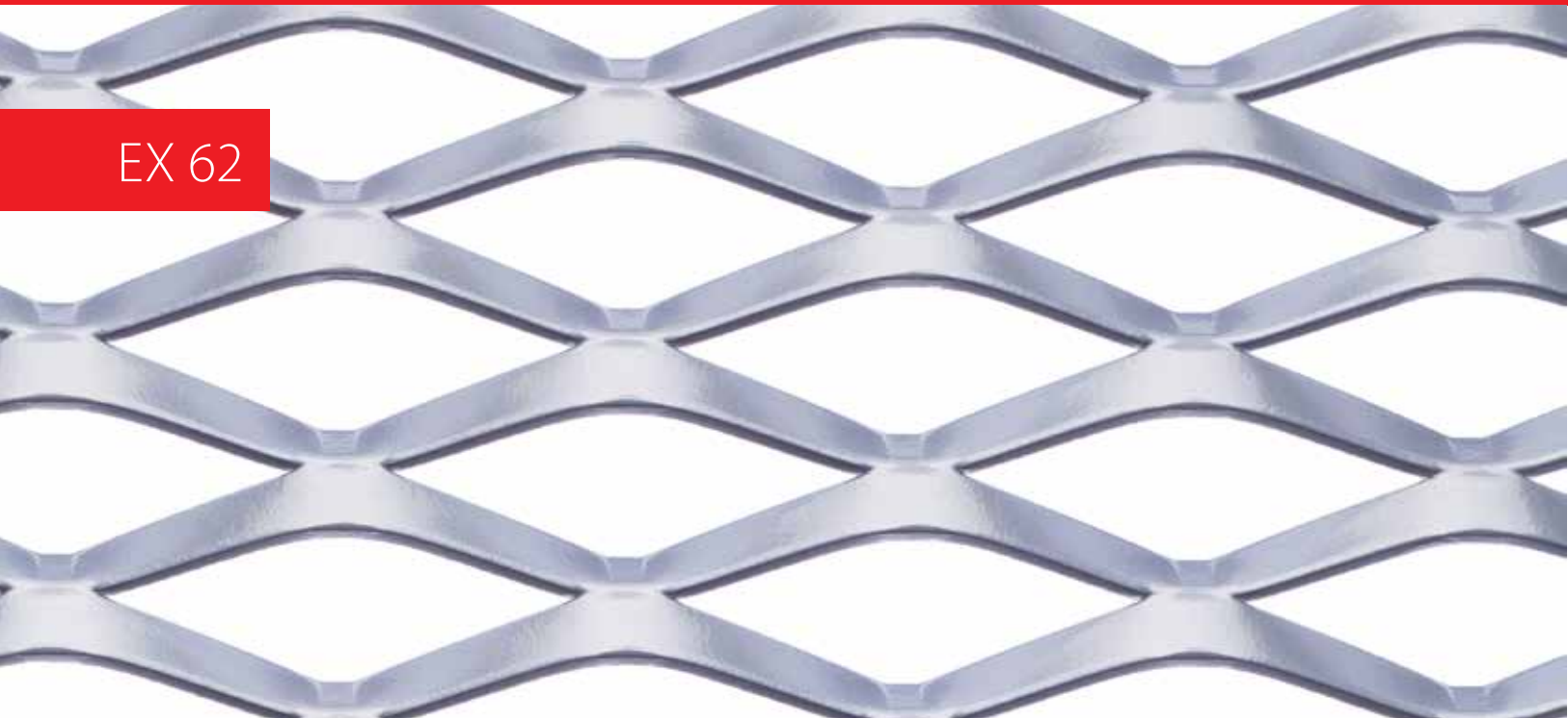


EX 42



EX42		Thickness (mm)		Transparency	Weight (kg/m ²)	
		wall	material		steel	Al
Length (L)	42	2.00	0.70	73%	1.5	0.51
Width (W)	15	3.00	0.80	60%	2.56	0.87
Max width	1250	4.00	1.00	47%	4.25	1.44
in mm		5.00	1.50	33%	-	2.70
		5.00	2.00	33%	-	3.60

EX 62



EX62		Thickness (mm)		Transparency	Weight (kg/m ²)	
		wall	material		steel	Al
Length (L)	62	2.00	1.00	82%	1.40	0.50
Width (W)	23	3.00	1.50	74%	3.10	1.10
Max width	1250	4.00	2.00	65%	5.60	1.90
in mm		5.00	2.00	57%	6.95	2.35

References

Each year more than 1500 new customers, investors and designers recognize the Pan Komerc as safe and proven partner that justifies their trust. These are just some of them...



NIS Gazprom Neft Serbia, KNAUF INTERFER Germany, OMYA Austria, HOTEL ZIRA Belgrade, Shopping moll UŠĆE Belgrade, BMW Serbia, ŠKODA Serbia, TOYOTA Serbia, FIAT Serbia, AUDI (Audi salons, France), ASTON MARTIN (Aston Martin salon, Croatia), NEKTAR Serbia, CARLSBERG Serbia, BREWERY APATIN Serbia, TETRA PACK Serbia, SWISS LION TAKOVO Serbia, STADA-HEMOFARM Serbia, ENMON Serbia, ATOMSKA BANJA Serbia, URADI SAM Serbia, BOHOR Serbia, BEMAX Montenegro, TRIMO Serbia, BOSNIA RAILWAYS, Police Academy Danilovgrad Montenegro, Užice and Pirot Swimming Pools, Arilje, Vrnjačka Banja, Požega, Podgorica Sport Halls...



Quality certificates



In 2011 Pan Komerc first Serbian company that acquired **CE mark** for profiled metal sheets for roofing and facades.

What CE mark stands for? Products labeled with **CE mark** are sold in EU market and they meet the demands of European standards which guarantee safe use (including safety, health and environmental regulations). The product needs **CE mark** in order to be sold on the EU market.

As an exporter for many years, Pan Komerc has met strict demands of **EN14782 standard** for sheet metal products and therefore provided additional security and quality of Pan roofing and wall profiles. Product quality control is being performed daily in our manufacturing plant alongside of rigorous testing that our products passed in certified institutes and laboratories.



Pan Komerc has implemented quality management system **ISO 9001:2008** in 2004 with assistance and regulations of German technical service **TUV SUD**. ISO 9001:2008 signifies that company operates according to defined strict criteria in order to achieve quality of products, services and customer satisfaction. Every process in Pan Komerc, from customer support to the manufacture process control, meets this standard.



Pan Komerc has implemented quality management system **ISO 14001:2004** in 2013 with assistance and regulations of German technical service **TUV SUD**. ISO 14001:2004 signifies that our manufacturing process does not pollute the environment and prevent potential adverse impacts. By purchasing our products you assist in achieving this goal.



By choice of **Chamber of Commerce and Industry of Serbia** and **credit-Coface**, Pan Komerc Ltd. is classified as a successful and reliable company. Electronic certificate **Excellent SME** certificate is designed in the spirit of the EU directive on the promotion of successful companies, with the purpose not only to promote successful companies and good business practices, but also increase the transparency of operations and safety and consumer protection.



ROOF



FACADE



CEILING



FENCE



ACCESSORIES

In addition to products containing this catalog get to know with other products in the range of Pan Komercc on our website www.pankomercc.com



PANKOMERC

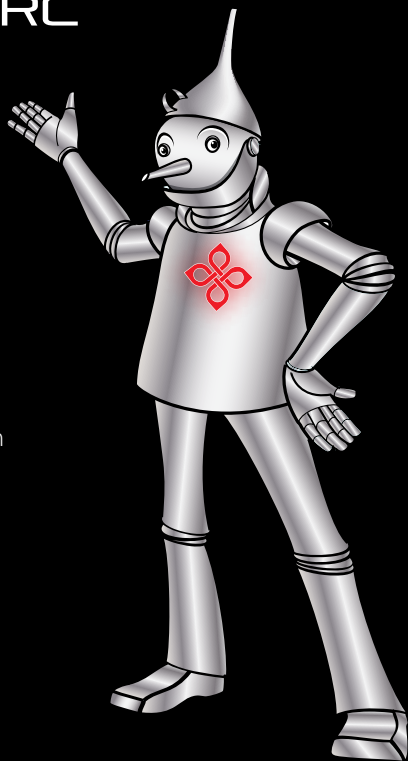
Sheet metal wizards®

Headquarters

Pan Komerac doo
Knjaza Miloša 92/1
31 210 Požega, Serbia

tel. +381 31 812 225
fax +381 31 3716 091

e-mail: info@pankomerc.com



www.pankomerc.com